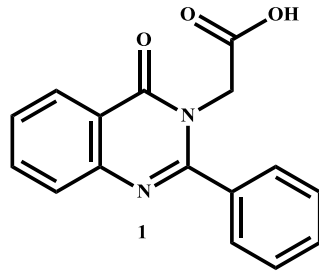
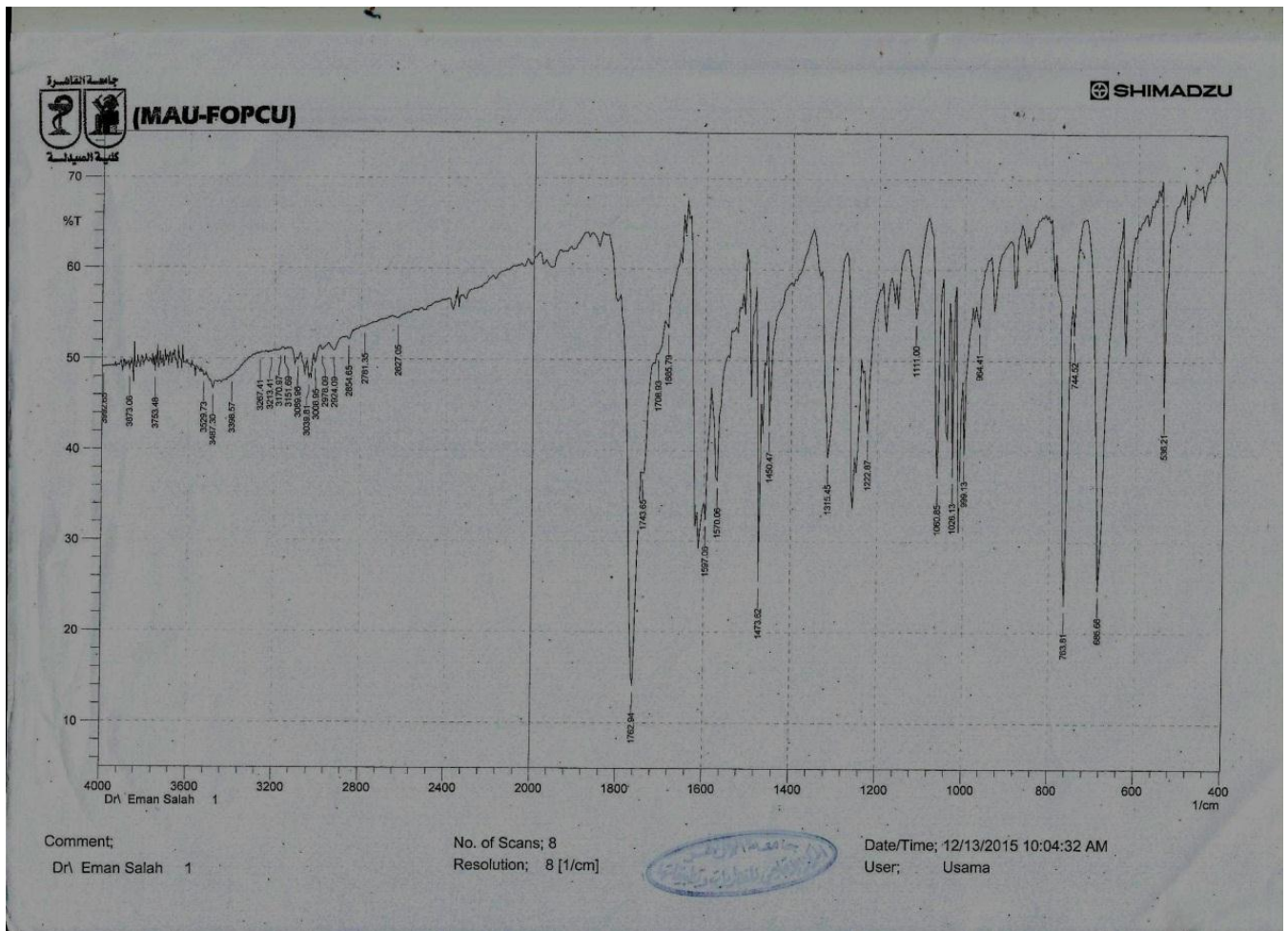


Compound 1

2-(4-oxo-2-phenylquinazolin-3(4H)-yl)acetic acid

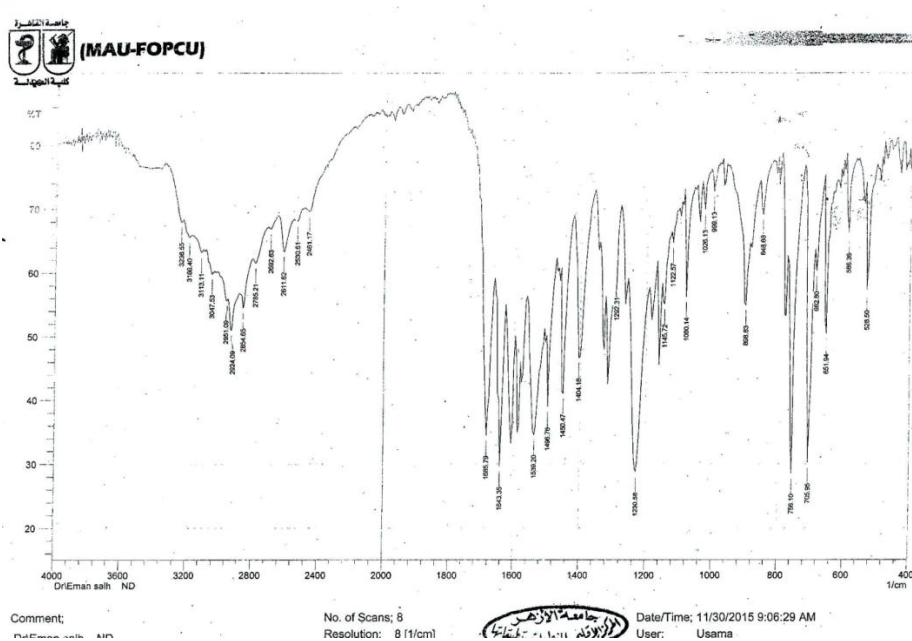


IR spectrum of compound 1

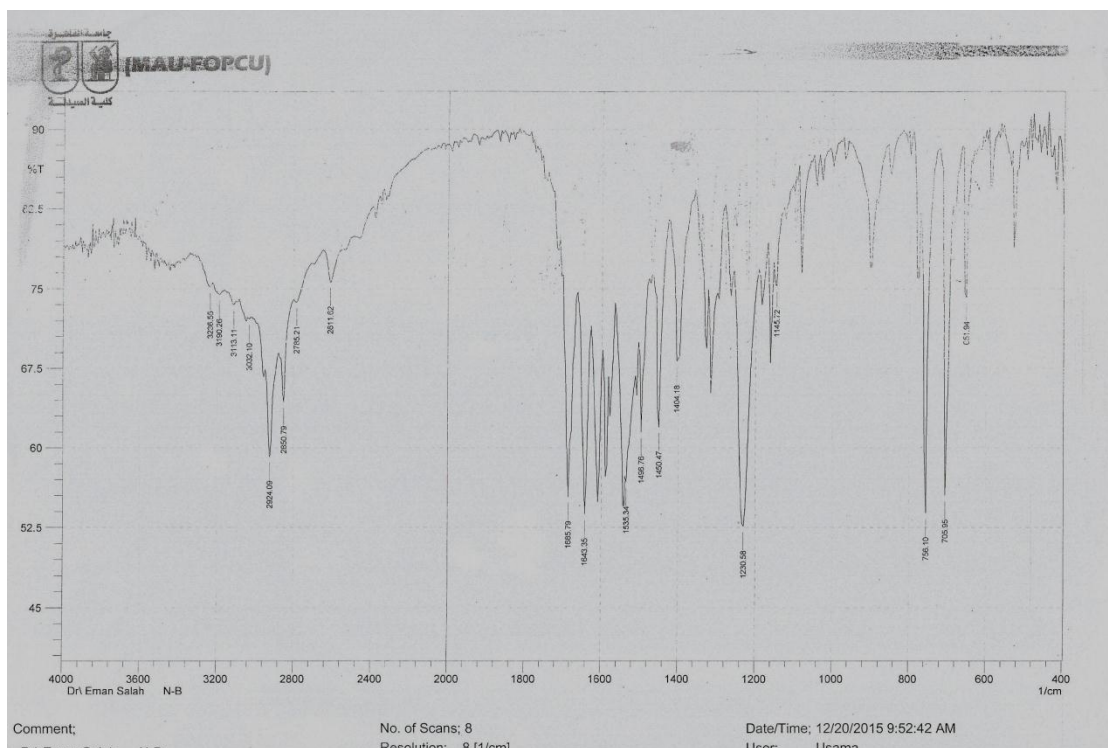


The superposition of IR spectra obtained for products obtained from reaction of the ester 3 with *p*-anisidine and ethanolamine

IR spectra obtained for product obtained from reaction of the ester 3 with *p*-anisidine

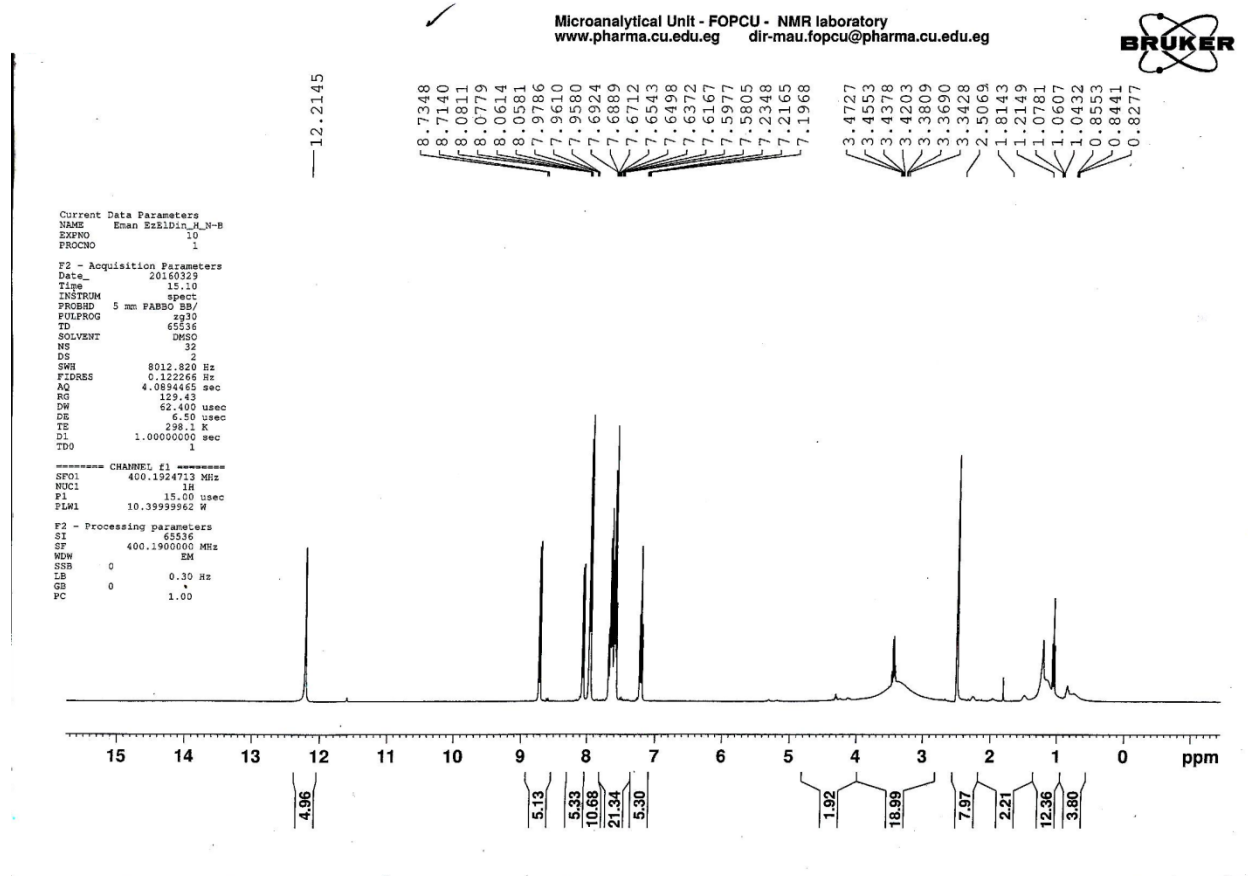


IR spectra obtained for product obtained from reaction of the ester 3 with ethanolamine



Comparison of the ^1H NMR spectra for product 1 obtained from reaction of the ester 3 with ethanolamine and piperazine

^1H NMR spectra from reaction reaction of the ester 3 with ethanolamine





8.7348
8.7140

8.0811
8.0779
8.0614
8.0581
7.9786
7.9610
7.9580

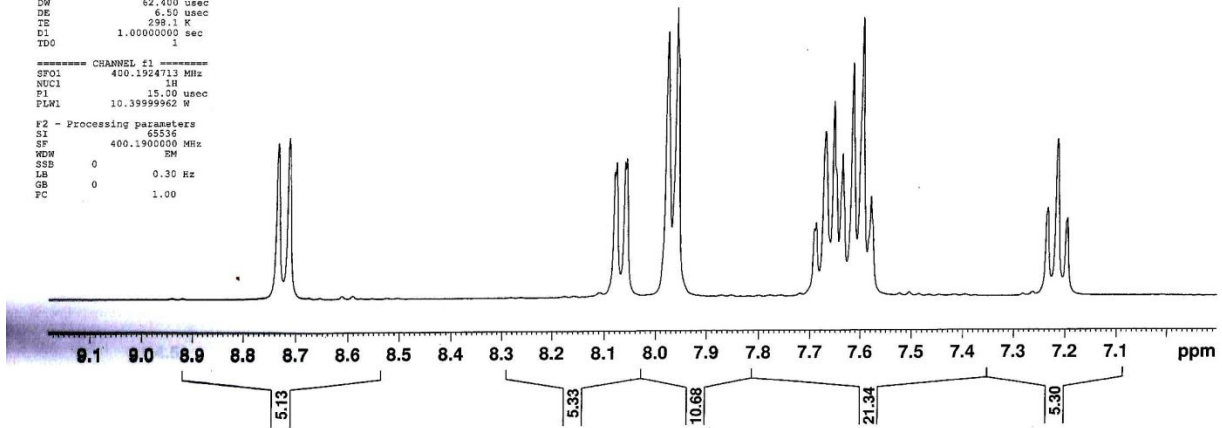
7.6924
7.6889
7.6712
7.6543
7.6498
7.6372
7.6167
7.5977
7.5805

7.2348
7.2165
7.1968

Current Data Parameters
NAME Eran Ez21Dia_N-D
EXPNO 10
PROCNO 1
F2 - Acquisition Parameters
Date_ 20160329
Time 15.10
INSTRUM spect
PROBHD 5 mm PABBO BB/
PULPROG zg30
TD 65536
SOLVENT DMSO
NS 32
DS 2
SWH 8012.820 Hz
FIDRES 0.122266 Hz
AQ 4.0894465 sec
RG 129.43
CW 62.400 usec
DE 6.50 usec
TE 298.1 K
EI 1.00000000 sec
TD 1

----- CHANNEL f1 -----
SFO1 400.1524713 MHz
NUC1 1H
P1 15.00 usec
PLW1 10.39599962 W

F2 - Processing parameters
SI 65536
SF 400.1900000 MHz
WDW EM
SSB 0
LB 0.30 Hz
GB 0
PC 1.00



D₂O

D₂O

Microanalytical Unit - FOPCU - NMR laboratory
www.pharma.cu.edu.eg dir-mau.fopcu@pharma.cu.edu.eg



```
Current Data Parameters
NAME      Eman EtRDiDio_M-N-B_D2O
EXPNO    10
PROCNO   1

F2 - Acquisition Parameters
Date_    20160330
Time     10.09
INSTRUM  spect
PROBHD   5 mm PABBO BH/
PULPROG  zg30
TD       65536
SOLVENT  DMSO
NS       32
DS       2
SWH      8012.820 Hz
FIDRES   0.122266 Hz
AQ       4.0894465 sec
RG       129.43
DW       62.400 usec
DE       6.50 usec
TE       298.0 K
D1       1.0000000 sec
TDO      1

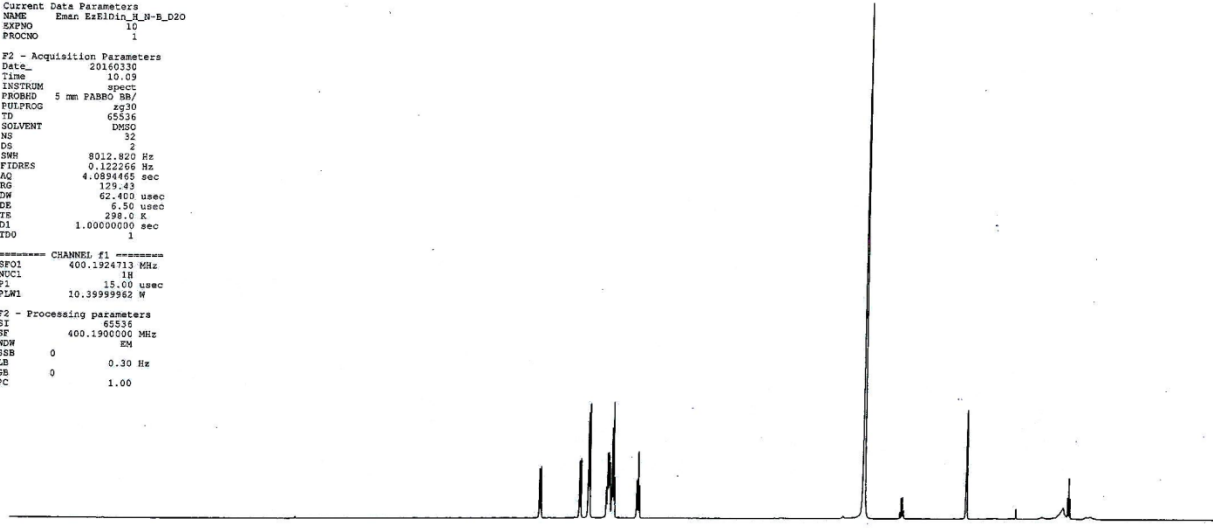
===== CHANNEL f1 =====
SFO1     400.1924713 MHz
NUC1     1H
P1       15.00 usec
PLW1     10.39999962 W

F2 - Processing parameters
SI       65536
SF       400.1900000 MHz
RGW      EM
SSB      0
LB       0.30 Hz
GB       0
PC       1.00
```

8.6225
8.6015
8.0391
8.0194
7.9121
7.8920
7.8545
7.6366
7.6225
7.6051
7.5767
7.5577
7.5397
7.2235
7.2046
7.1855

3.9827
3.9728
3.4526
3.4351
3.4176
3.4000
2.5084

1.7993
1.1187
1.0553
1.0378
1.0203



16 15 14 13 12 11 10 9 8 7 6 5 4 3 2 1 0 ppm

4.50
4.71
9.30
18.59
4.52

43.04
1.36
6.30
0.62
5.97
1.08

D₂O

Microanalytical Unit - FOPCU - NMR laboratory
www.pharma.cu.edu.eg dir-mau.fopcu@pharma.cu.edu.eg



8.6225
8.6015

8.0391
8.0194

7.9121
7.8920

7.6545
7.6366
7.6225
7.6051
7.5767
7.5577
7.5397

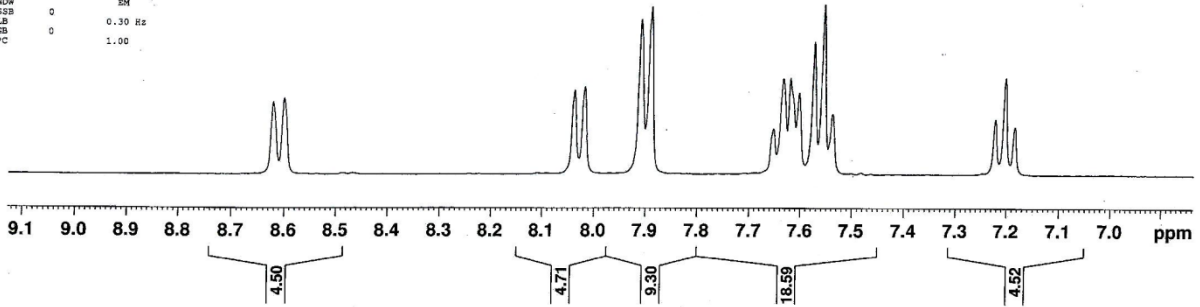
7.2235
7.2046
7.1855

```
Current Data Parameters
NAME      E2an E21din_A_N-B_D2O
EXFNO    10
PROCNO    1

F2 - Acquisition Parameters
Date_     20160330
Time      10.09
INSTRUM   spect
PROBHD    5 mm PABBO BB/
PULPROG   zg30
TD         65536
SOLVENT   DMSO
DS         2
SWH        8612.820 Hz
FIDRES     0.122266 Hz
AQ         4.0894665 sec
RG         129.43
SW         62.460 usec
DE         6.59 usec
TE         298.0 K
D1         1.0000000 sec
TDO        1

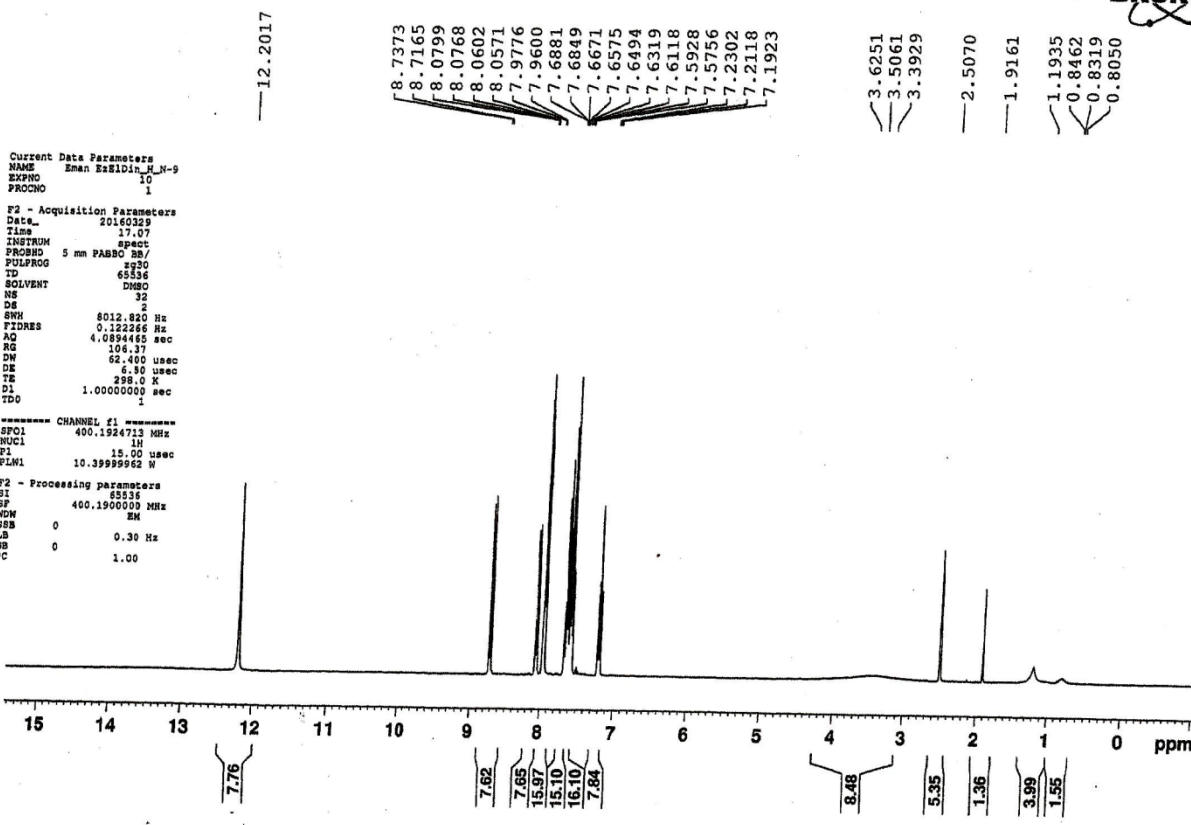
===== CHANNEL f1 =====
SEF1      400.1924713 MHz
NUC1      1H
P1        15.00 usec
PLM1      10.39999962 W

F2 - Processing parameters
SI        65536
SF        400.1900000 MHz
WDW       EM
SSB       0
LB        0.30 Hz
GB        0
PC        1.00
```



¹H NMR and ¹³C NMR spectra from reaction of the ester 3 with piperazine

www.pharma.uoi.edu.eg - FOPCU - NMR laboratory
www.pharma.uoi.edu.eg dir-mau.fopcu@pharma.uoi.edu.eg





8.7373
8.7165

8.0799
8.0768
8.0602
8.0571
7.9776
7.9600

7.6881
7.6849
7.6671
7.6575
7.6494
7.6319
7.6118
7.5928
7.5756

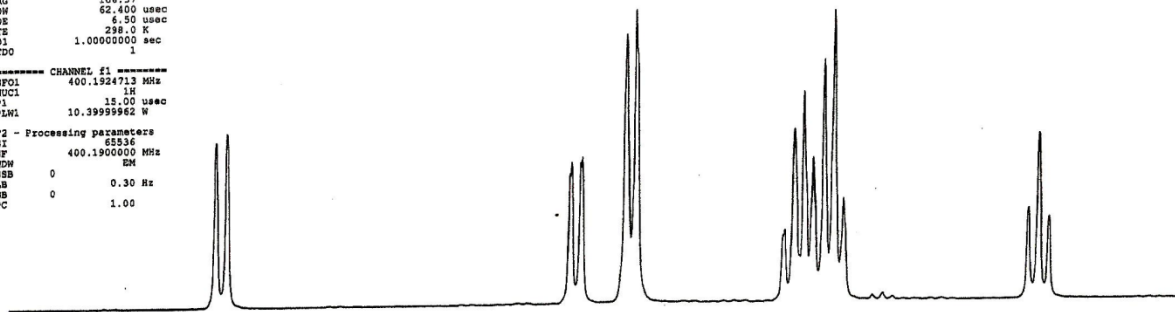
7.2302
7.2118
7.1923

Current Data Parameters
NAME Emsn EtEtDin_M_N-9
EXPNO 10
PROCNO 1

F2 - Acquisition Parameters
Date_ 20190329
Time 17.07
INSTRUM spect
PROBHD 5 mm PABBO BB/
PULPROG zg30
TD 65536
SOLVENT DMSO
NS 32
DS 2
SWH 8013.820 Hz
FIDRES 0.122265 Hz
AQ 4.0894465 sec
RG 104.37
DM 62.400 usec
DE 8.50 usec
TE 298.0 K
D1 1.00000000 sec
TDO 1

==== CHANNEL f1 =====
SF01 400.1924713 MHz
NUC1 1H
P1 15.00 usec
PLW1 10.3995982 W

F2 - Processing parameters
SI 65536
SF 400.1900000 MHz
WDW EM
SSB 0
LB 0.30 Hz
GB 0
PC 1.00



9.0 8.9 8.8 8.7 8.6 8.5 8.4 8.3 8.2 8.1 8.0 7.9 7.8 7.7 7.6 7.5 7.4 7.3 7.2 7.1 ppm

7.62

7.65

15.97

15.10

16.10

7.84

D₂O

D₂O

Microanalytical Unit - FOPCU - NMR laboratory
www.pharma.cu.edu.eg dir-mau.fopcu@pharma.cu.edu.eg

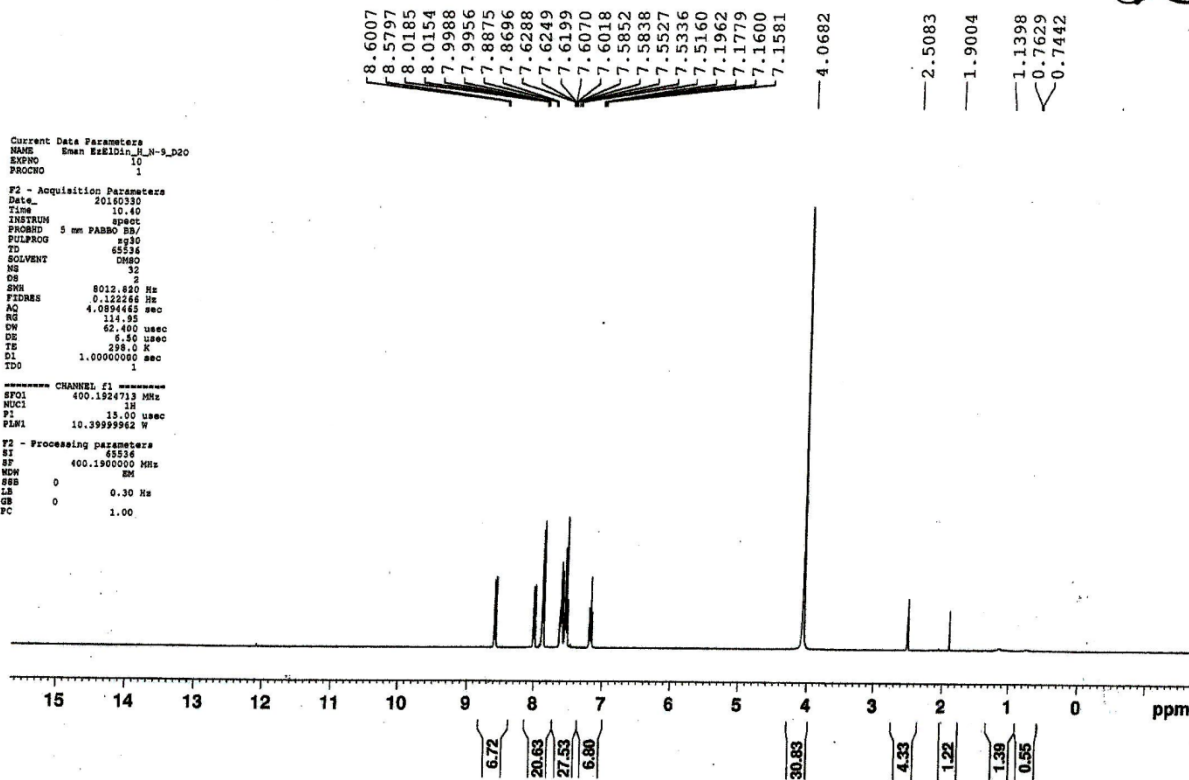


```
Current Data Parameters
NAME      Emen E2K10in_H_N-9_D2o
EXPNO    10
PROCNO   1

F2 - Acquisition Parameters
Date_    20160330
Time     10.40
INSTRUM  spect
PROBHD   5 mm PABBO BB/
PULPROG  zg30
TD       65536
SOLVENT  DMSO
NS       32
DS       2
SFO1     8012.820 Hz
FIDRES   0.122268 Hz
AQ       4.0894465 sec
RG       114.95
DW       62.400 usec
DE       5.50 usec
TE       298.2 K
D1       1.00000000 sec
TD0      1

===== CHANNEL f1 =====
SFO1     400.1324713 MHz
NUC1     1H
P1       13.00 usec
P1M1    10.39999962 W

F2 - Processing parameters
SI       65536
SF       400.1300000 MHz
WDW      EM
SSB      0
LB       0.30 Hz
GB       0
PC       1.00
```



D₂O

D2O

Microanalytical Unit - FOPCU - NMR laboratory
www.pharma.cu.edu.eg dir-mau.fopcu@pharma.cu.edu.eg



```
===== Data Parameters =====
NAME      Eman BeSIDa_N-9_D2O
EXPNO     1
PROCNO    1

F2 - Acquisition Parameters
Date_     20160330
Time      10.40
INSTRUM   spect
PROBHD    5 mm PABBO BB7
PULPROG   zg30
TD        65536
SOLVENT   DMSO
NS        32
DS        2
SWH       8012.820 Hz
FIDRES    0.122256 Hz
AQ        4.0994465 sec
RG        114.95
DW        62.400 usec
DE        6.50 usec
TE        298.0 K
D1        1.00000000 sec
YD0       1

===== CHANNEL f1 =====
SFO1      400.192413 MHz
NUC1      1H
P1        15.00 usec
PL1       10.39999902 W

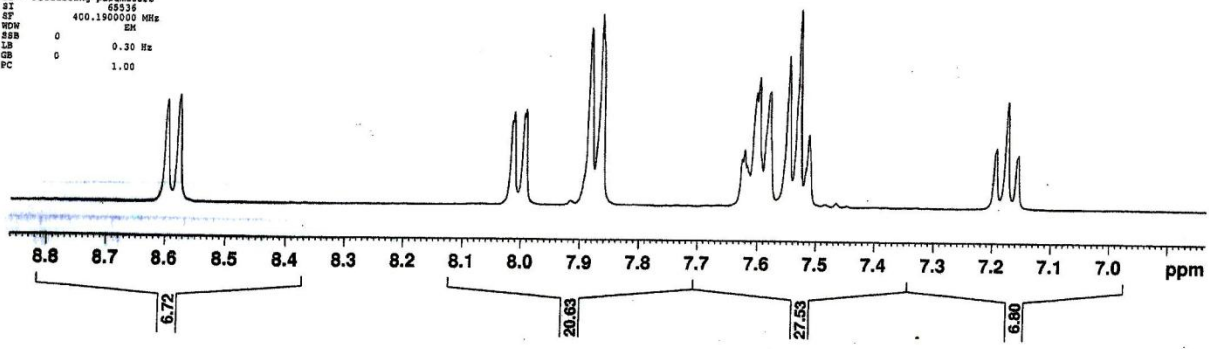
F2 - Processing parameters
SI        65536
SF        400.1900000 MHz
WDW       EM
SSB       0
LB        0.30 Hz
GB        0
PC        1.00
```

8.6007
8.5797

8.0185
8.0154
7.9988
7.9956
7.8875
7.8696

7.6288
7.6249
7.6199
7.6070
7.6018
7.5852
7.5838
7.5527
7.5336
7.5160

7.1962
7.1779
7.1600
7.1581



¹³C-NMR

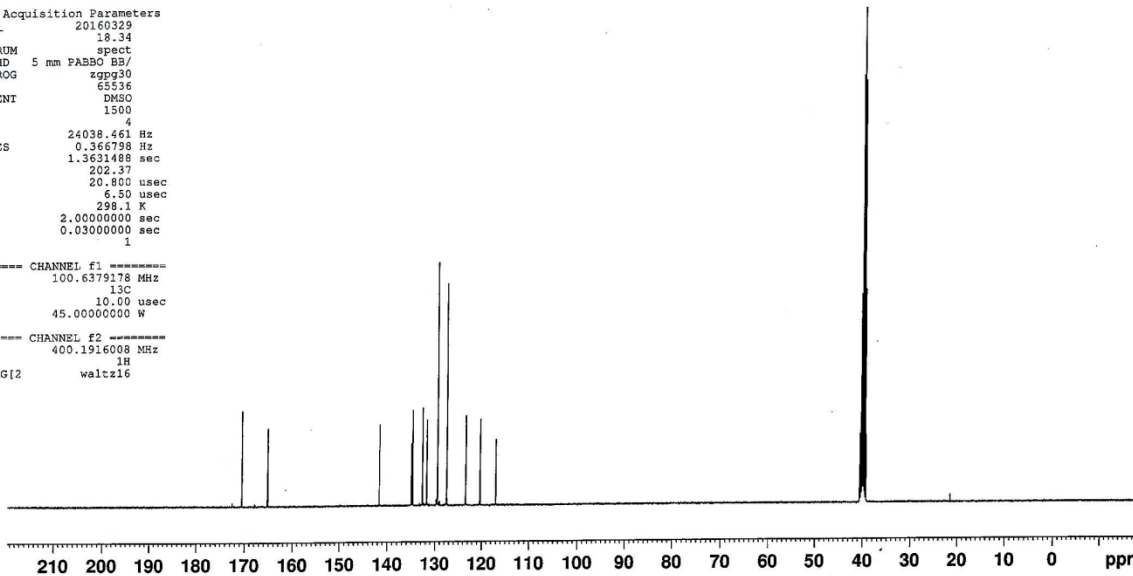
Microanalytical Unit - FOPCU - NMR laboratory
www.pharma.cu.edu.eg dir-mau.fopcu@pharma.cu.edu.eg

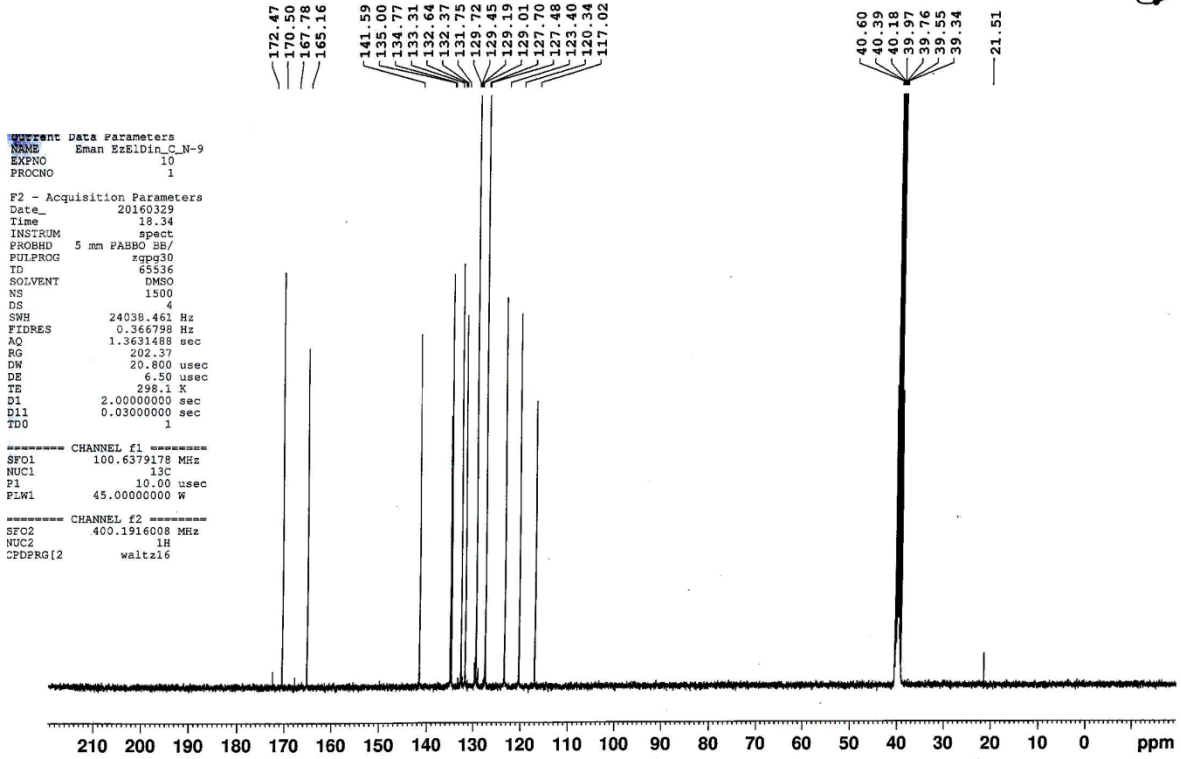


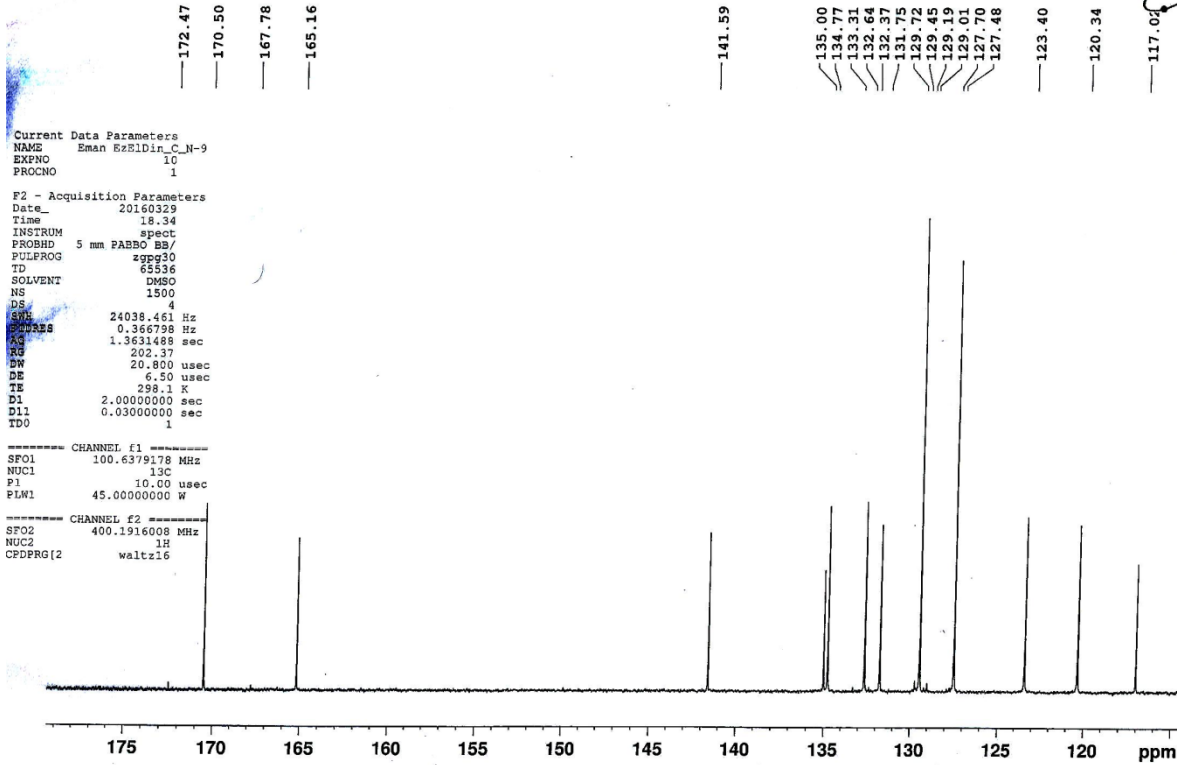
Current Data Parameters
NAME Eman EzEIdin_C_N-9
EXPNO 10
PROCNO 1

F2 - Acquisition Parameters
Date_ 20160329
Time 18.34
INSTRUM spect
PROBHD 5 mm PABBO BB/
PULPROG zgpg30
TD 65536
SOLVENT DMSO
NS 1500
DS 4
SWH 24038.461 Hz
FIDRES 0.366798 Hz
AQ 1.3631488 sec
RG 202.37
DW 20.800 usec
DE 6.50 usec
TE 298.1 K
D1 2.00000000 sec
D11 0.03000000 sec
TDC 1

==== CHANNEL f1 =====
SFO1 100.6379178 MHz
NUC1 13C
P1 10.00 usec
PLW1 45.00000000 W
==== CHANNEL f2 =====
SFO2 400.1916008 MHz
NUC2 1H
CPDPRG2 waltz16

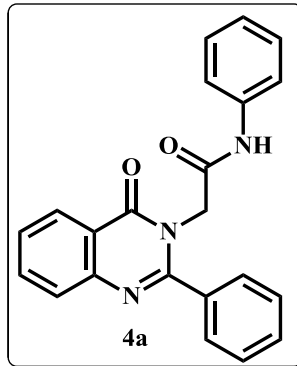




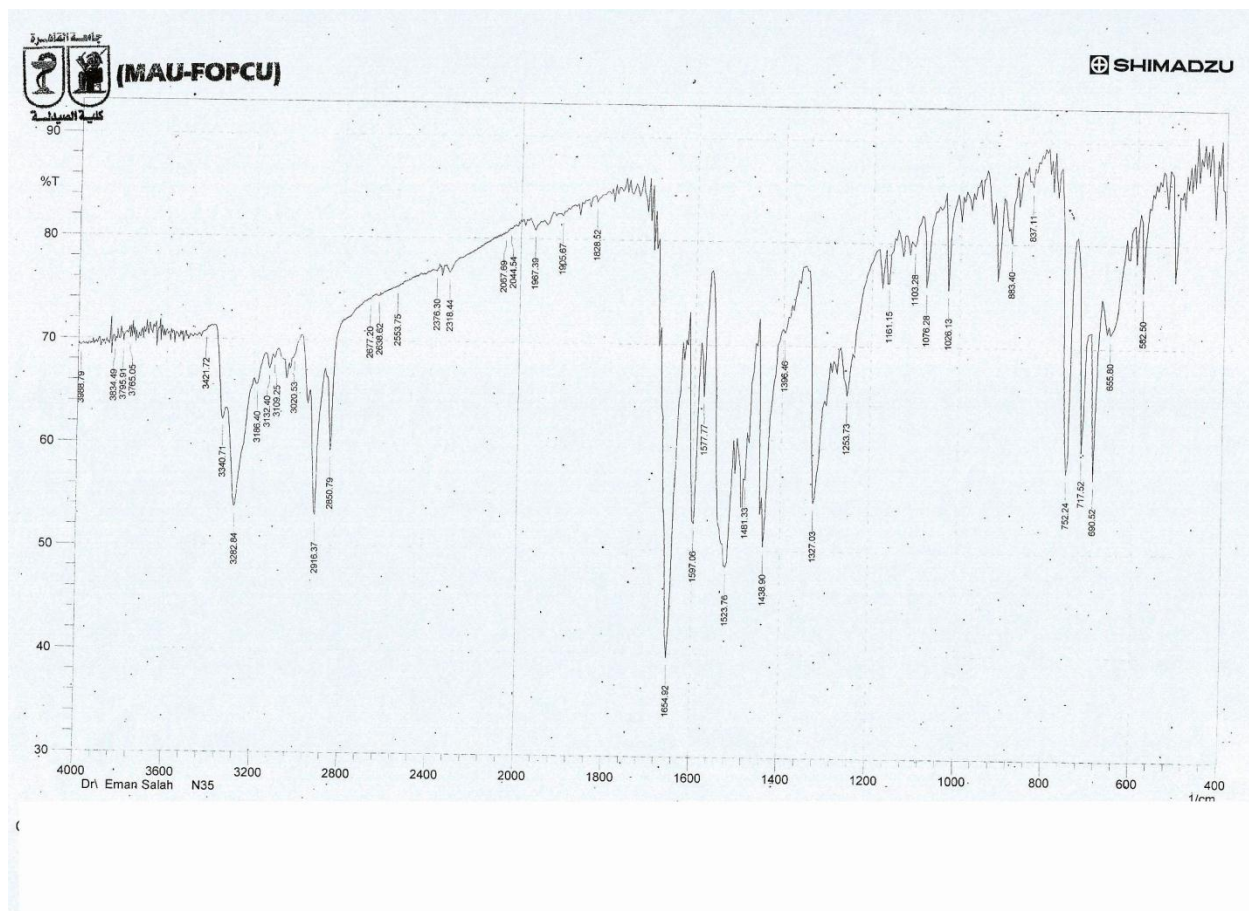


Compound 4a

2-(4-oxo-2-phenylquinazolin-3(4H)-yl)-N-phenylacetamide

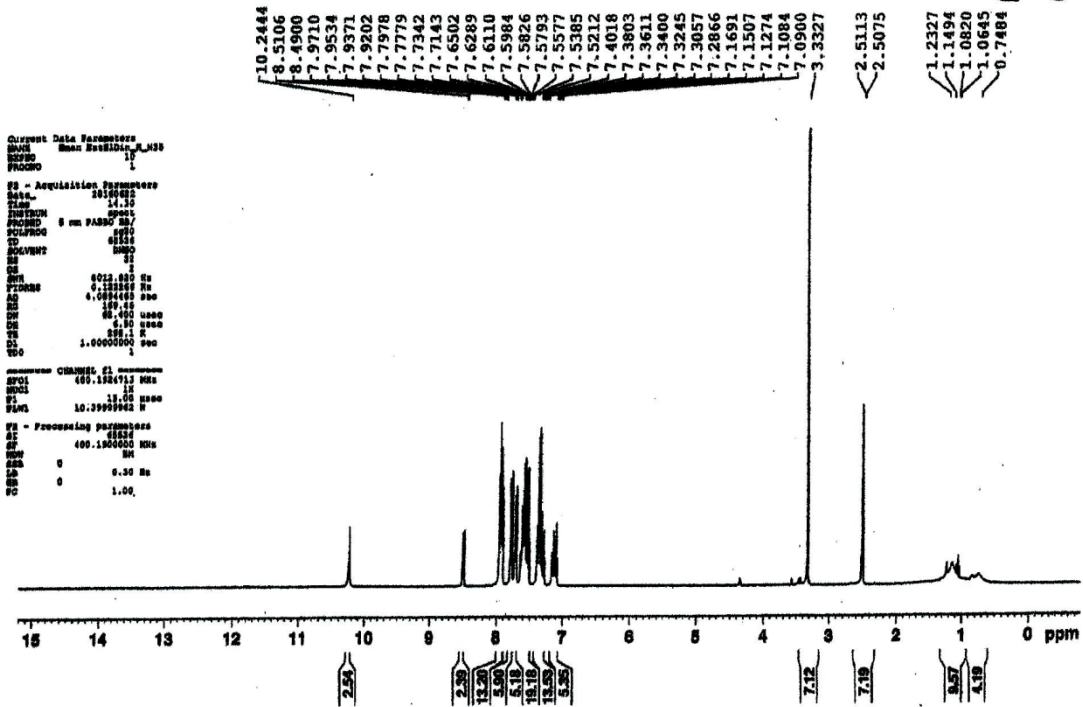


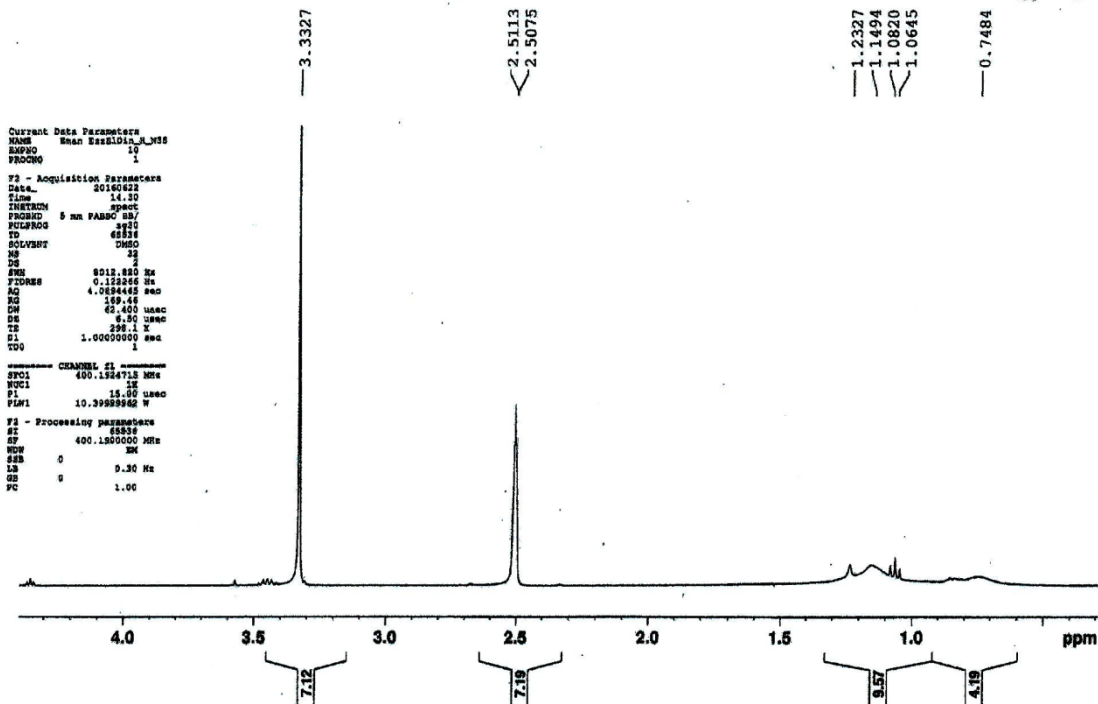
IR of compound4a



¹H NMR of compound 4a

Microanalytical Unit - POPCU - NMR laboratory
 www.pharma.uu.edu.eg dir-msu.fopou@pharma.uu.edu.eg







10.2444

8.5106
 8.4900
 7.9710
 7.9534
 7.9371
 7.9202
 7.7978
 7.7779
 7.7342
 7.7143
 7.6502
 7.6289
 7.6110
 7.5984
 7.5826
 7.5793
 7.5577
 7.5385
 7.5212
 7.4018
 7.3803
 7.3611
 7.3400
 7.3245
 7.3057
 7.2866
 7.1691
 7.1507
 7.1274
 7.1084
 7.0900

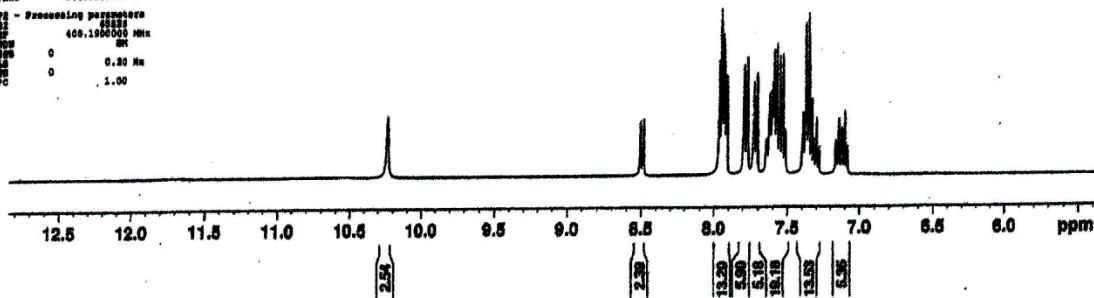
```

Current Data Parameters
NAME      Eman E8181D1A_M_N35
EXPNO    10
PROCNO   1

F2 - Acquisition Parameters
Date_    20160822
Time     14.30
INSTRUM  spect
PROBHD   5 mm PABBO BB/
PULPROG  zgpg30
TD        65536
SOLVENT  DMSO
NS        2
DS        2
SWH       8013.820 Hz
FIDRES   0.122266 Hz
AQ        4.0584485 sec
RG        129.46
DF        62.400 usec
DE        6.80 usec
TE        298.1 K
D1        1.00000000 sec
TD0       1

===== CHANNEL f1 =====
RFQ1     400.1504713 MHz
NUC1     13
P1        18.00 usec
P1M1     10.39989942 W

F2 - Processing parameters
SI        32768
SF        400.1500000 MHz
WDW       EM
SSB       0
GB        0
CB        0.30 Hz
B0        0
PC        1.00
    
```



8.5106
 8.4900

7.9710
 7.9534
 7.9371
 7.9202
 7.7978
 7.7779
 7.7342
 7.7143
 7.6502
 7.6289
 7.6110
 7.5984
 7.5826
 7.5793
 7.5577
 7.5385
 7.5212
 7.4018
 7.3803
 7.3611
 7.3400
 7.3245
 7.3057
 7.2866
 7.1691
 7.1507
 7.1274
 7.1084
 7.0900

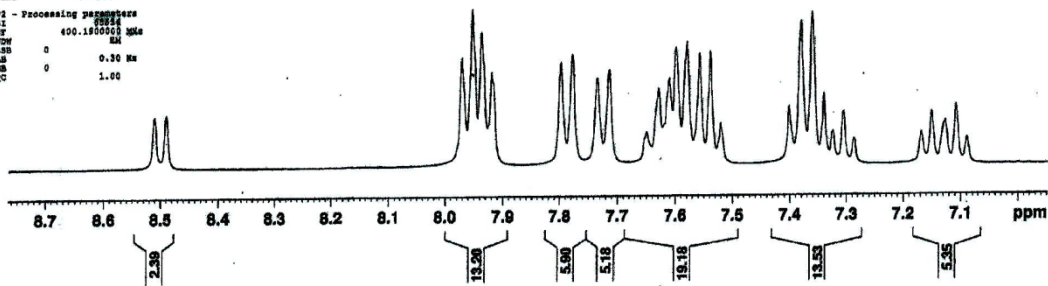
```

Current Data Parameters
NAME      Eman E8181D1A_M_N35
EXPNO    10
PROCNO   1

F2 - Acquisition Parameters
Date_    20160822
Time     14.30
INSTRUM  spect
PROBHD   5 mm PABBO BB/
PULPROG  zgpg30
TD        65536
SOLVENT  DMSO
NS        2
DS        2
SWH       8013.820 Hz
FIDRES   0.122266 Hz
AQ        4.0584485 sec
RG        129.46
DF        62.400 usec
DE        6.80 usec
TE        298.1 K
D1        1.00000000 sec
TD0       1

===== CHANNEL f1 =====
RFQ1     400.1504713 MHz
NUC1     13
P1        18.00 usec
P1M1     10.39989942 W

F2 - Processing parameters
SI        32768
SF        400.1500000 MHz
WDW       EM
SSB       0
GB        0
CB        0.30 Hz
B0        0
PC        1.00
    
```



D₂O

D20

Microanalytical Unit - FOPCU - NMR laboratory
www.pharma.ou.edu.eg dir-mau.fopcu@pharma.ou.edu.eg



Current Data Parameters
NAME Eban Eran10101a_H_113_D2O
EXPNO 17
PROCNO 1

F1 - Acquisition Parameters
Date_ 20140923
Time 11:32
INSTRUM spect
PROBHD 5 mm PABBO NS/
PULPROG zgpg30
TD 65536
SOLVENT DMSO
NS 32
DS 2
SWH 4032.820 Hz
FIDRES 0.132266 Hz
AQ 4.0834483 sec
RG 248.44
SFO 60.400 MHz
SR 6.30 MHz
TD 65536
SFO 60.400 MHz
SI 1.0000000 sec
SD 1

===== CHANNEL f1 =====
NUC1 13C
P1 18.00 usec
PL1 0.00 dB
SFO1 101.625375 MHz

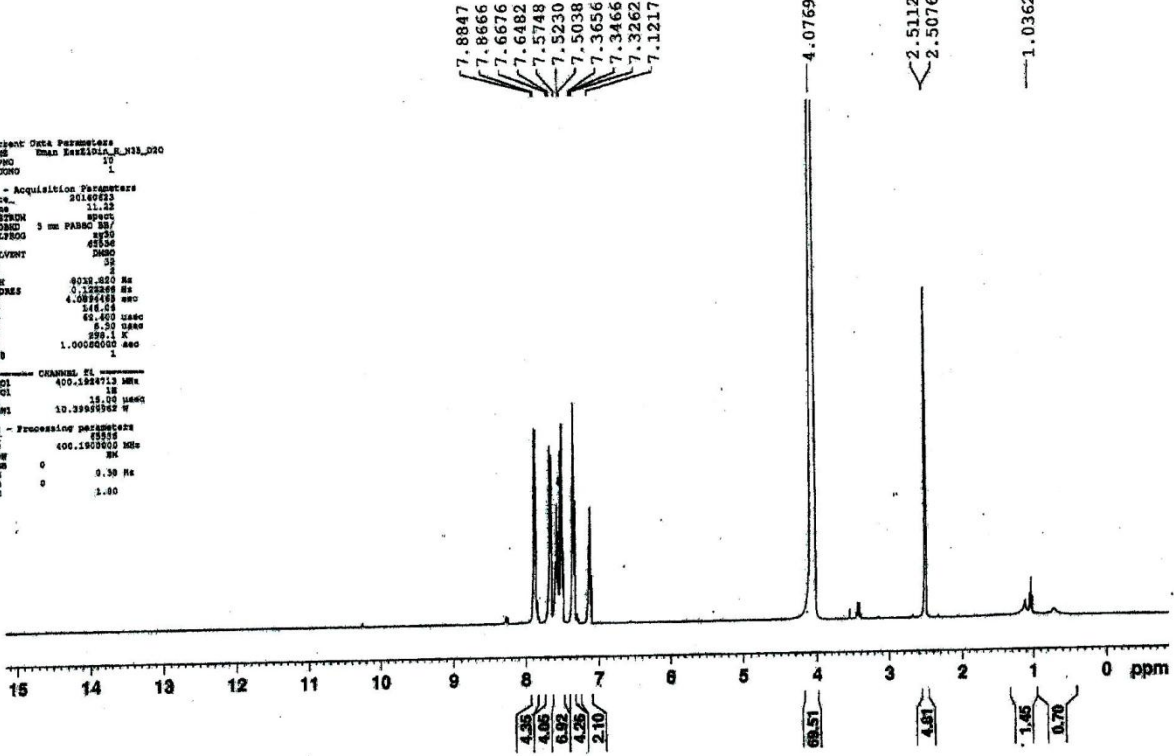
F2 - Processing parameters
SI 65536
SF 400.146000 MHz
WDW EM
SS 0
LB 0.30 Hz
GB 0
PC 1.00

7.8847
7.8666
7.6676
7.6482
7.5748
7.5230
7.5038
7.3656
7.3466
7.3262
7.1217

4.0769

2.5112
2.5076

1.0362



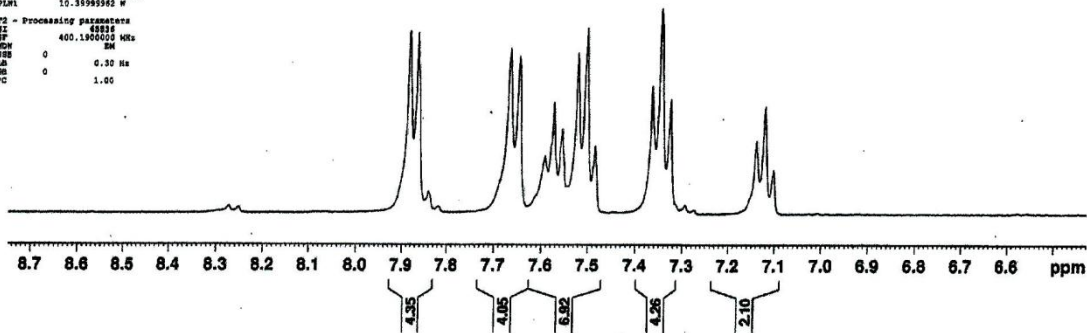
D2O

Microanalytical Unit - FOPCU - NMR laboratory
www.pharma.ou.edu.eg dir-mau.fopcu@pharma.ou.edu.eg



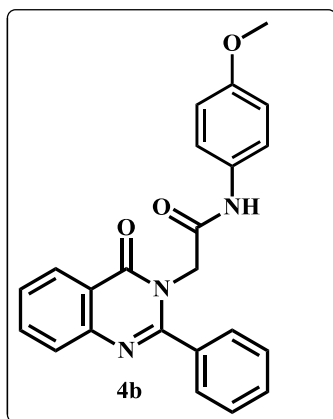
7.8847
7.8666
7.6676
7.6482
7.5748
7.5230
7.5038
7.3656
7.3466
7.3262
7.1217

Current Data Parameters
NAME Emax 8461041_4_N18_D2O
EXPNO 1
PROCNO 1
F2 - Acquisition Parameters
Date_ 20180623
Time 11.22
INSTRUM spect
PROBHD 5 mm F400 NMR/1
PULPROG zgpg30
TD 65536
SOLVENT DMSO
NS 2
DS 2
SWH 8013.820 Hz
FIDRES 0.182166 Hz
AQ 4.0984488 sec
RG 144.00
SQ 62.400 usec
DE 4.50 usec
TE 298.1 K
SI 1.0000000 sec
TD0 1
----- CHANNEL f1 -----
NUC1 400.1524713 MHz
P1 18
PL1 13.00 usec
PL12 10.35993982 W
F2 - Processing parameters
SI 65536
SF 400.1500000 MHz
WDW EM
SSB 0
LA 0.30 Hz
GB 0
PC 1.00

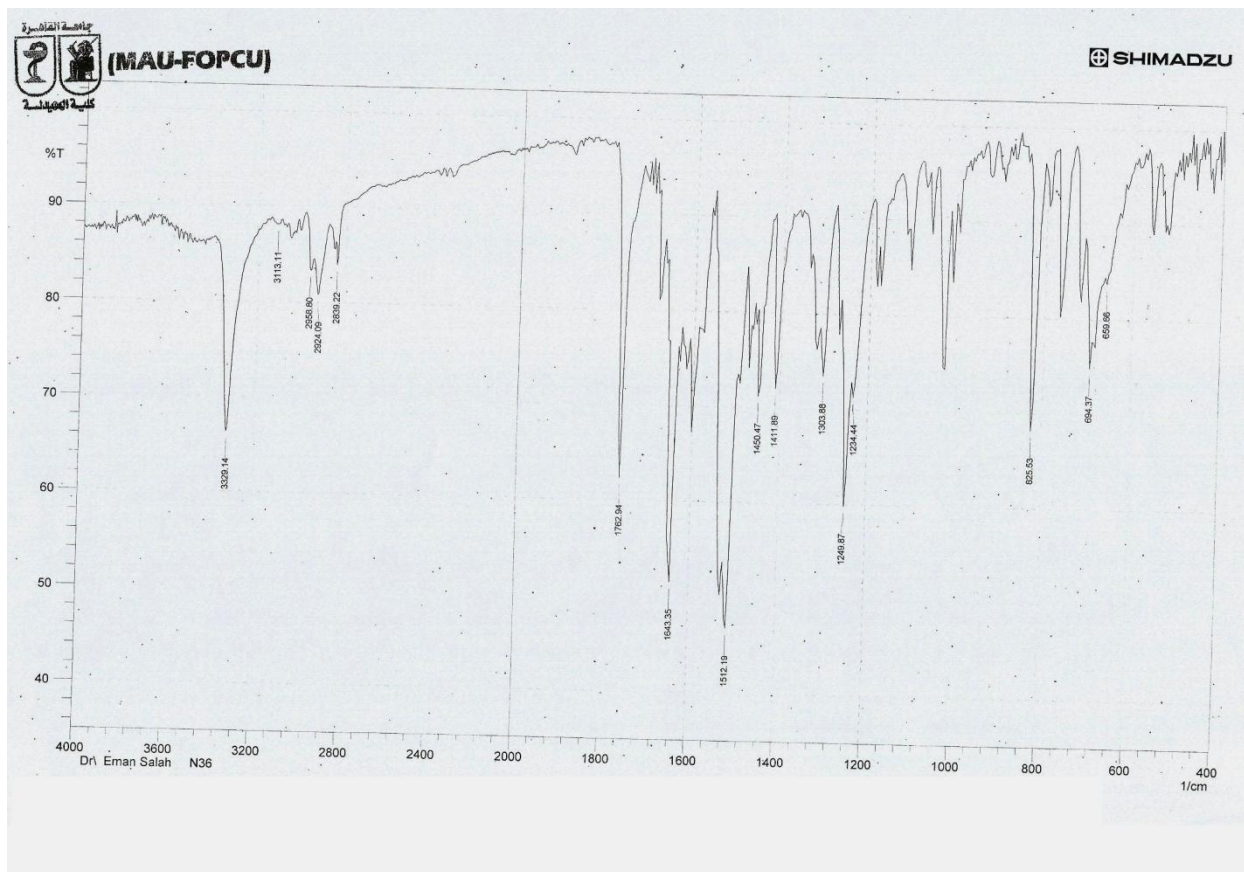


Compound 4b

N-(4-methoxyphenyl)-2-(4-oxo-2-phenylquinazolin-3(4H)-yl)acetamide

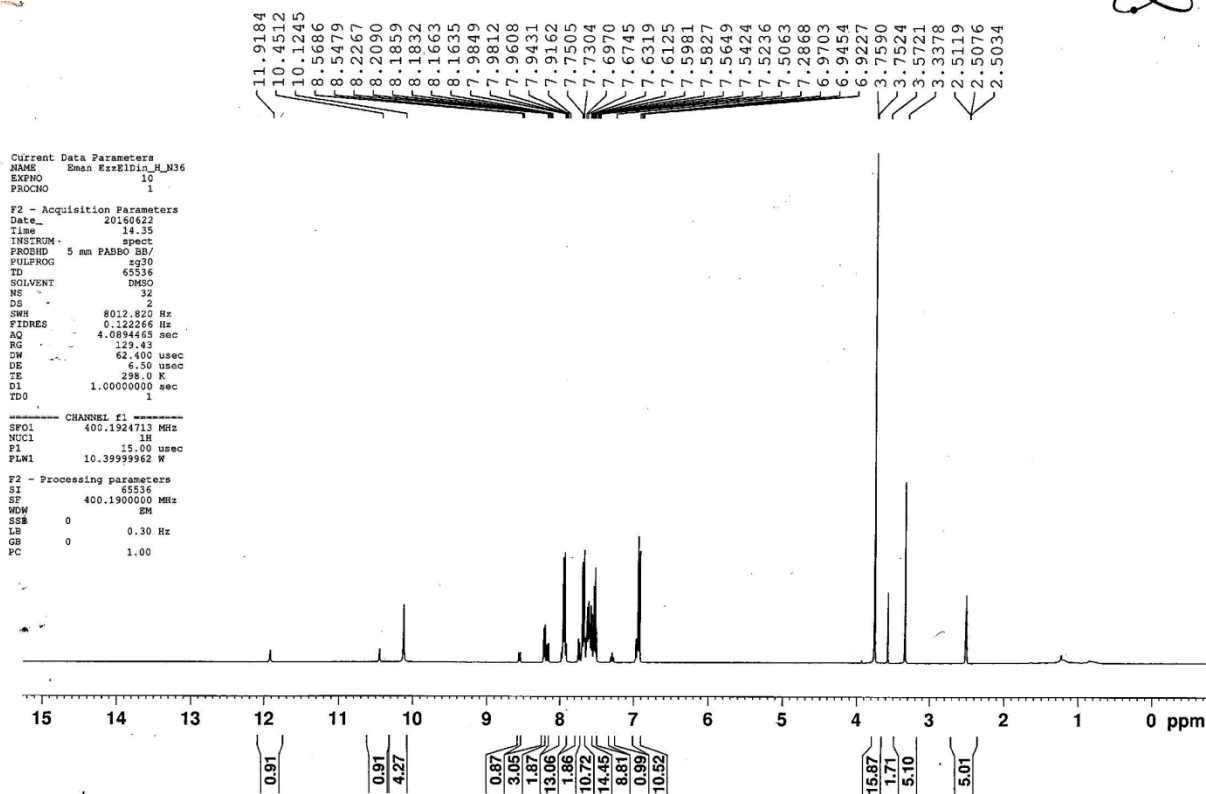


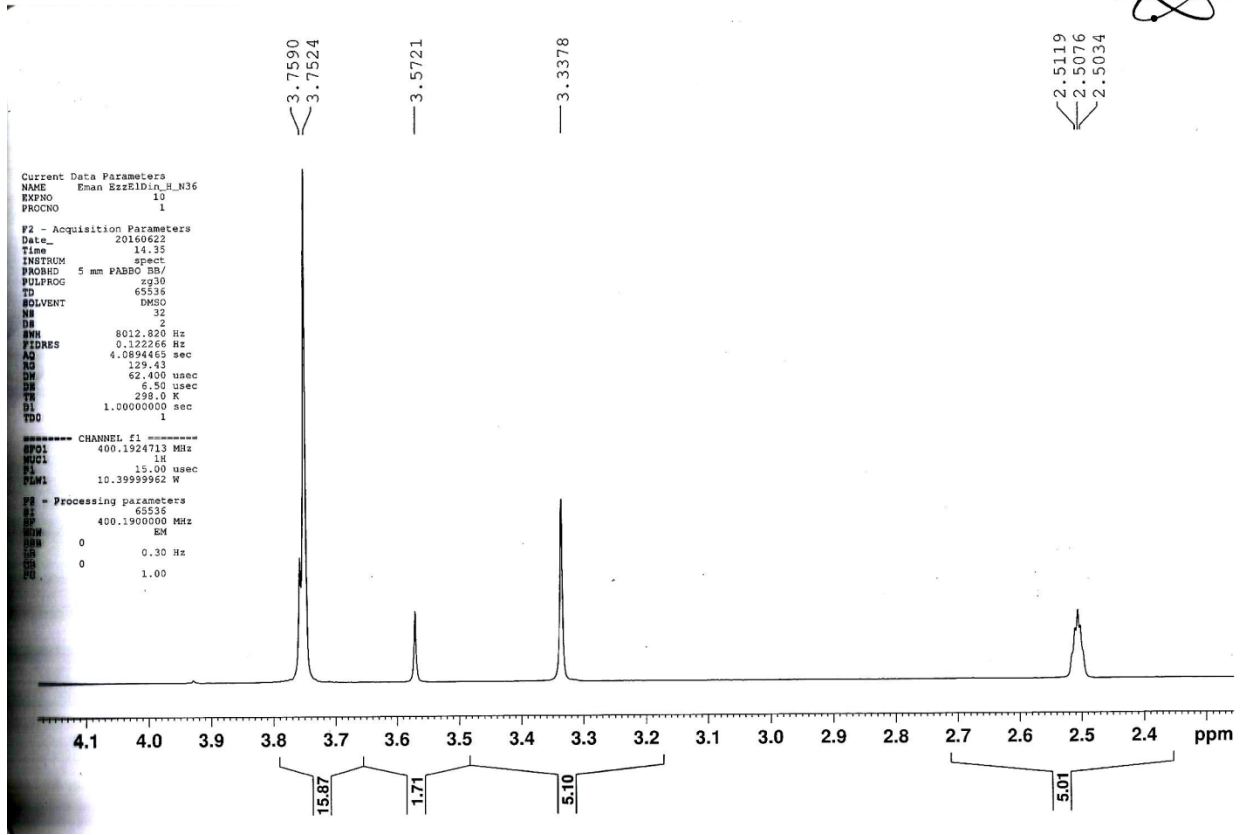
IR of compound 4b

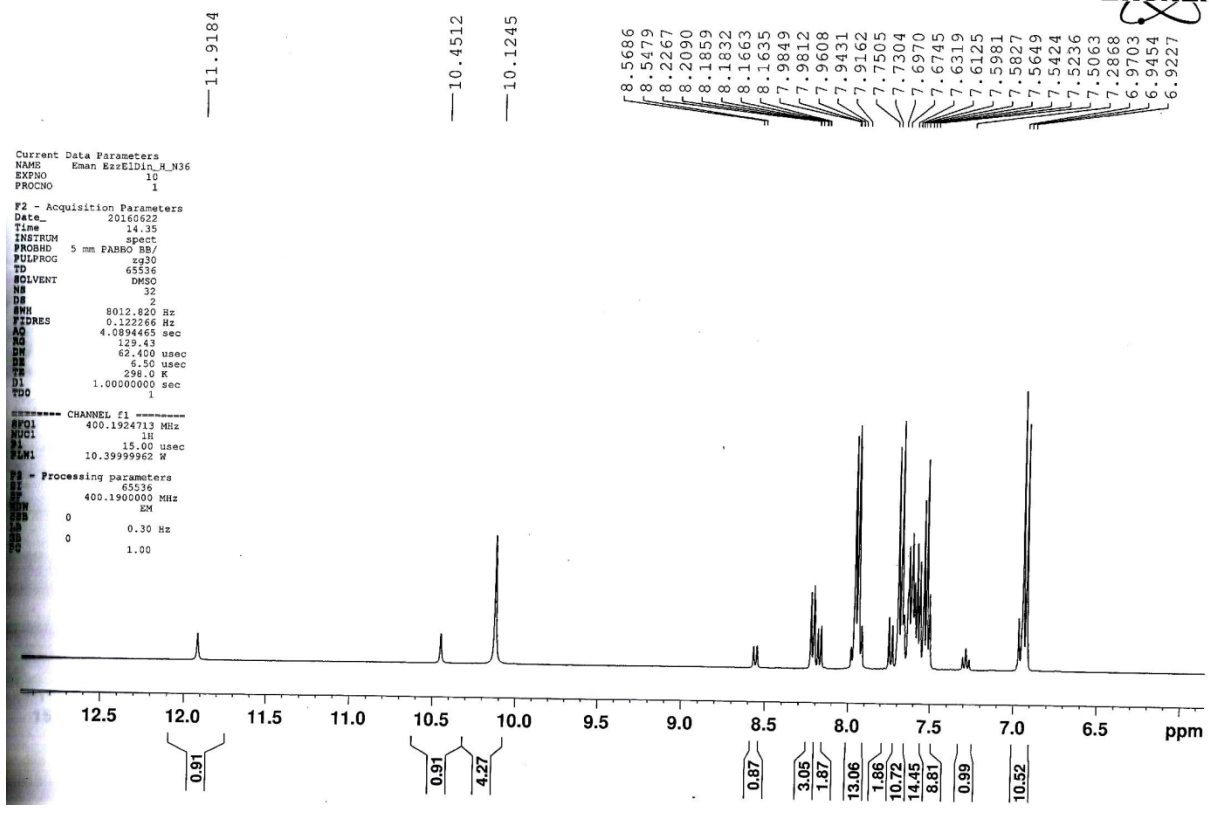


¹H NMR of compound 4b

Microanalytical Unit - FOPCU - NMR laboratory
www.pharma.cu.edu.eg dir-mau.fopcu@pharma.cu.edu.eg









8.5686
8.5479

8.2267
8.2090
8.1859
8.1832
8.1663
8.1635

7.9849
7.9812
7.9608
7.9431
7.9162

7.7505
7.7304
7.6970
7.6745
7.6319
7.6125
7.5981
7.5827
7.5649
7.5424
7.5236
7.5063

7.2868

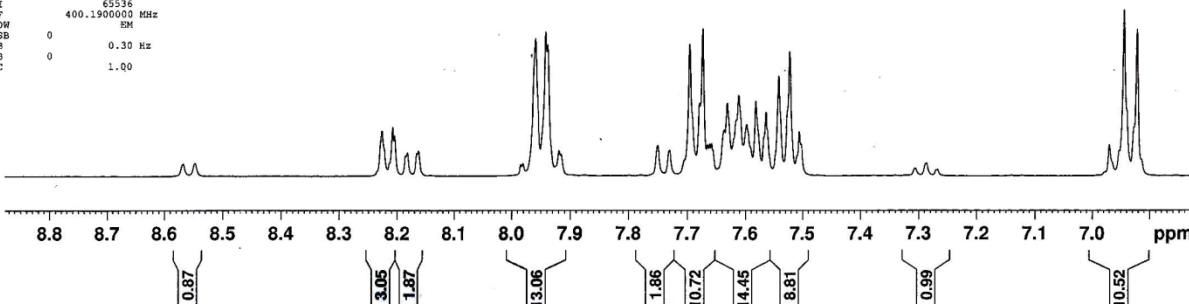
6.9703
6.9454
6.9227

```
Current Data Parameters
NAME      Kman KzzEldip_H_N36
EXPNO    10
PROCNO   1

F2 - Acquisition Parameters
Date_    20160622
Time     14.35
INSTRUM  spect
PROBHD   5 mm PABBO BB/
PULPROG  zg30
TD       65536
SOLVENT  DMSO
NS       32
DS       2
SWH      8012.820 Hz
FIDRES   0.122266 Hz
AQ       4.0894465 sec
RG       129.43
DW       62.400 usec
DE       6.50 usec
TE       298.0 K
D1       1.0000000 sec
D10      1
D11      1

----- CHANNEL f1 -----
SFO1     400.1924713 MHz
NUC1     1H
P1       15.00 usec
PLW1     10.39999962 W

F2 - Processing parameters
SI       65536
SF       400.1900000 MHz
WDW      EM
SSB      0
LB       0.30 Hz
GB       0
PC       1.00
```

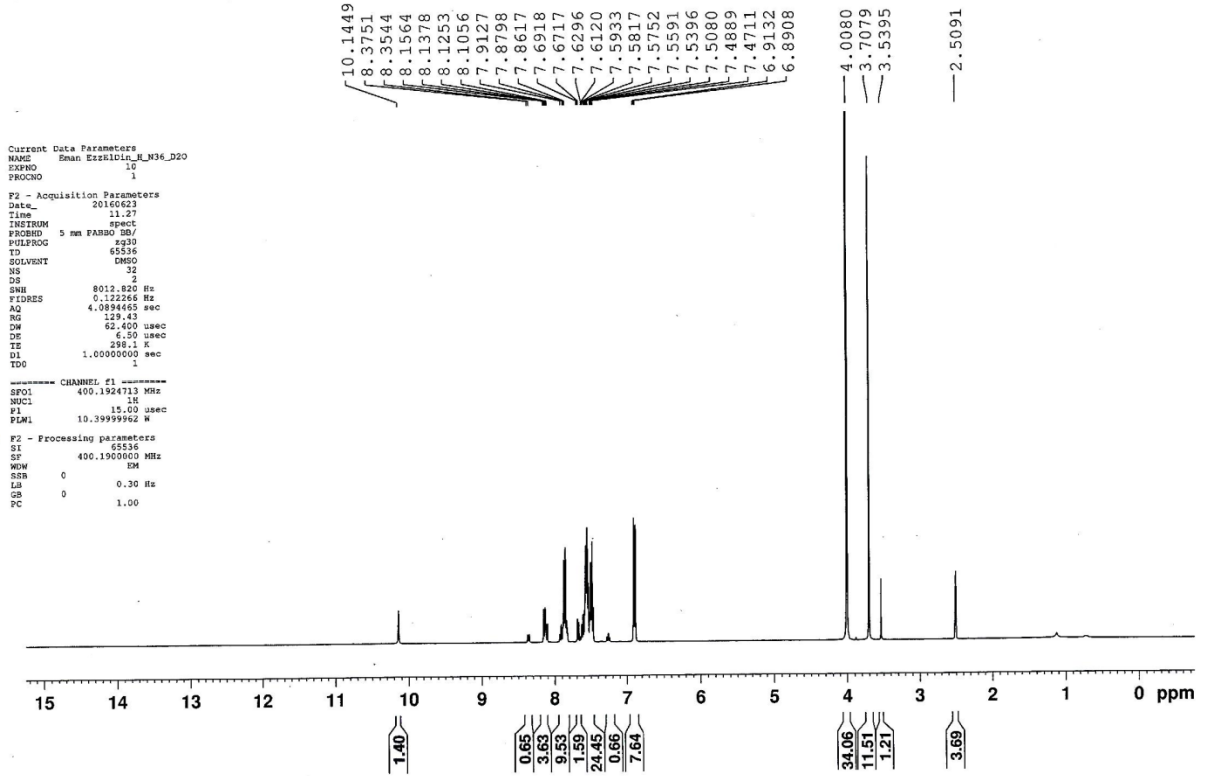


D₂O

Microanalytical Unit - FOPCU - NMR laboratory
www.pharma.cu.edu.eg dir-mau.fopcu@pharma.cu.edu.eg



D2O



D₂O

D2O

Microanalytical Unit - FOPCU - NMR laboratory
www.pharma.cu.edu.eg dir-mau.fopcu@pharma.cu.edu.eg



8.3751
8.3544

8.1564
8.1378
8.1253
8.1056

7.9127
7.8798
7.8617

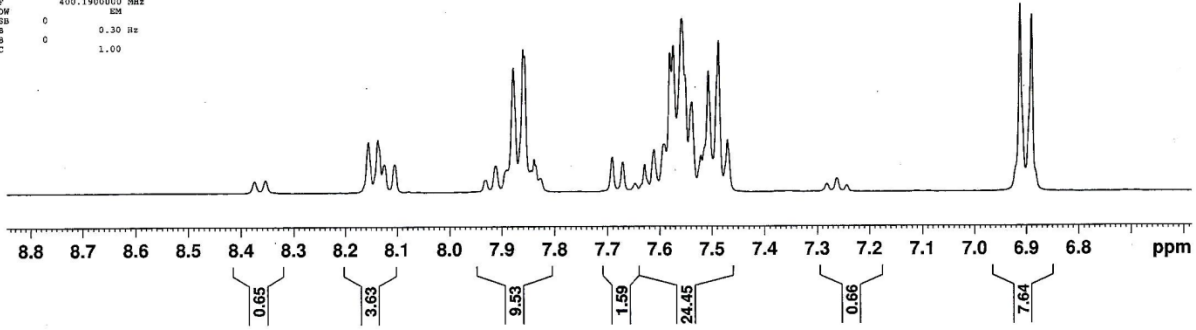
7.6918
7.6717
7.6296
7.6120
7.5933
7.5817
7.5752
7.5591
7.5396
7.5080
7.4889
7.4711

6.9132
6.8908

Current Data Parameters
NAME Eman EzzEldin_u36_D2o
EXPNO 10
PROCNO 1
F2 - Acquisition Parameters
Date_ 20160623
Time 11:27
INSTRUM spect
PROBHD 5 mm PABBO BB/
PULPROG zg30
TD 65536
SOLVENT DMSO
NS 32
DS 2
SWH 8012.820 Hz
FIDRES 0.122266 Hz
AQ 4.0894465 sec
RG 129.43
DW 62.400 usec
DE 6.50 usec
TE 298.1 K
D1 1.00000000 sec
TD0 1

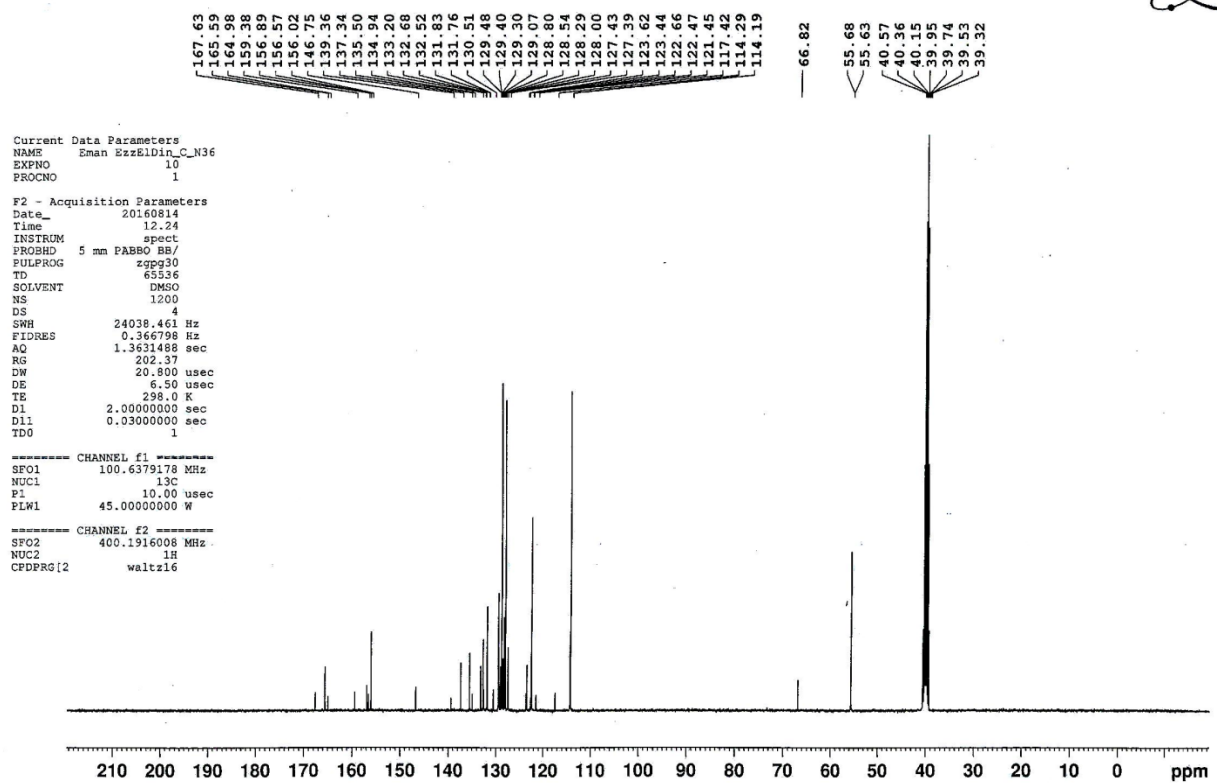
----- CHANNEL f1 -----
SFO1 400.1924713 MHz
NUC1 1H
P1 15.00 usec
PLW1 10.39999962 W

F2 - Processing parameters
SI 65536
SF 400.1900000 MHz
WDW EM
SSB 0
LB 0.30 Hz
GB 0
PC 1.00



¹³C NMR of compound 4b

Microanalytical Unit - FOPCU - NMR laboratory
www.pharma.cu.edu.eg dir-mau.fopcu@pharma.cu.edu.eg





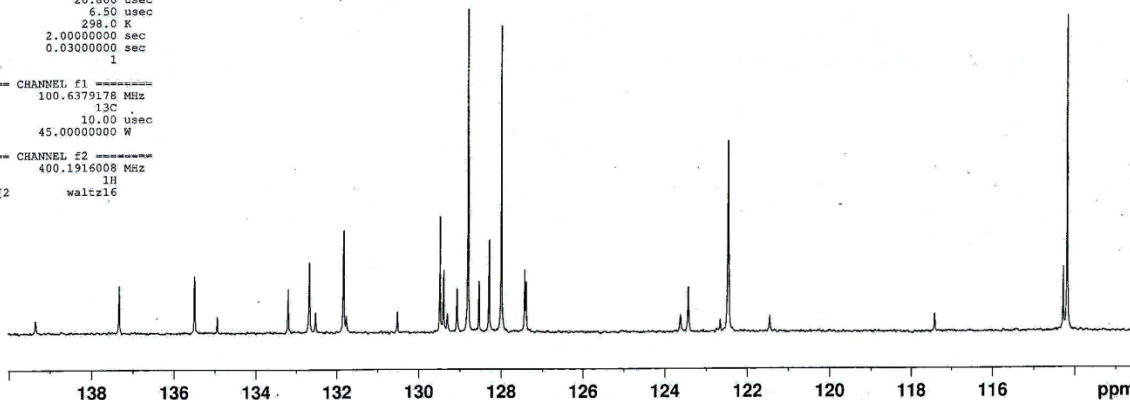
139.36 137.34 135.50 134.94 133.20 132.68 132.52 131.83 131.76 130.51 129.48 129.40 129.30 129.07 128.80 128.54 128.29 128.00 127.43 127.39 123.62 123.44 122.66 122.47 121.45 117.42 114.29 114.19

Current Data Parameters
NAME Eman ErzElDin_C_N36
EXPNO 10
PROCNO 1

F2 - Acquisition Parameters
Date_ 20160814
Time 12.24
INSTRUM spect
PROBHD 5 mm F4BBO BB/
PULPROG zgpg30
TD 65536
SOLVENT DMSO
NS 1200
DS 4
SWH 24038.461 Hz
FIDRES 0.366798 Hz
AQ 1.3631488 sec
RG 202.37
DW 20.800 usec
DE 6.50 usec
TE 298.0 K
D1 2.00000000 sec
D11 0.03000000 sec
TD0 1

----- CHANNEL f1 -----
SFO1 100.6379178 MHz
NUC1 13C
P1 10.00 usec
PLW1 45.00000000 W

----- CHANNEL f2 -----
SFO2 400.1916008 MHz
NUC2 1H
CPDPRG2 waltz16





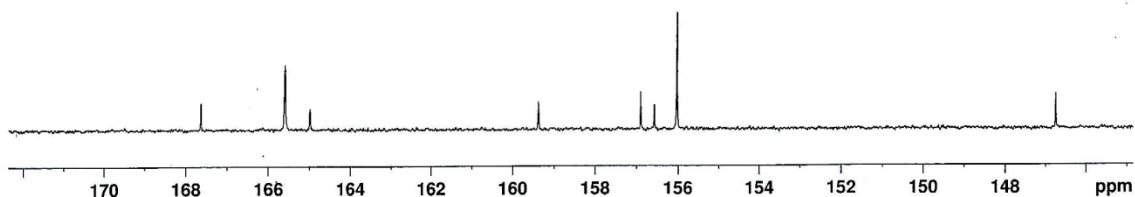
—167.63
—165.59
—164.98
—159.38
—156.89
—156.87
—156.02
—146.75

Current Data Parameters
NAME Eman EzzEIDIn_C_N36
EXPNO 10
PROCNO 1

F2 - Acquisition Parameters
Date_ 20160814
Time 12.24
INSTRUM spect
PROBHD 5 mm PABBO BBI/
PULPROG zgpg30
TD 65536
SOLVENT DMSO
NS 1200
DS 4
SWH 24038.461 Hz
FIDRES 0.366798 Hz
AQ 1.3631488 sec
RG 202.37
DW 20.800 usec
DE 6.50 usec
TE 298.0 K
D1 2.0000000 sec
D11 0.03000000 sec
TD0 1

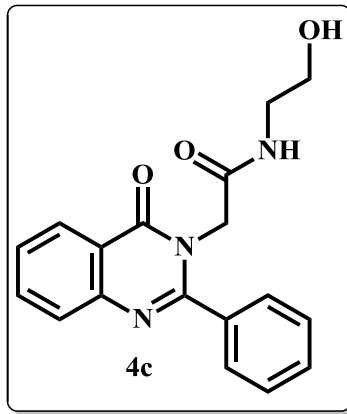
----- CHANNEL f1 -----
SFO1 100.6379178 MHz
NUC1 13C
P1 10.00 usec
PLW1 45.00000000 W

----- CHANNEL f2 -----
SFO2 400.1916008 MHz
NUC2 1H
CPDPRG2 waltz16

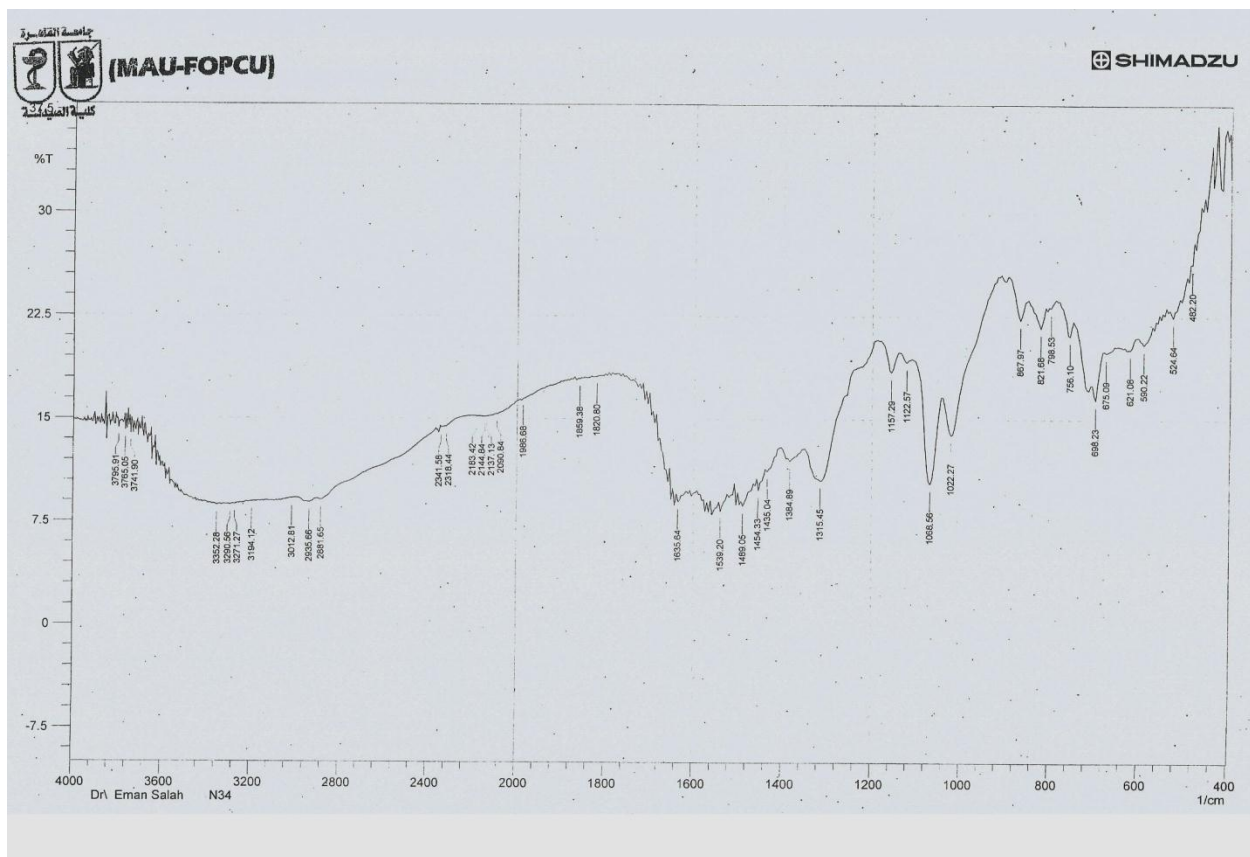


Compound 4c

N-(2-hydroxyethyl)-2-(4-oxo-2-phenylquinazolin-3(4H)-yl)acetamide

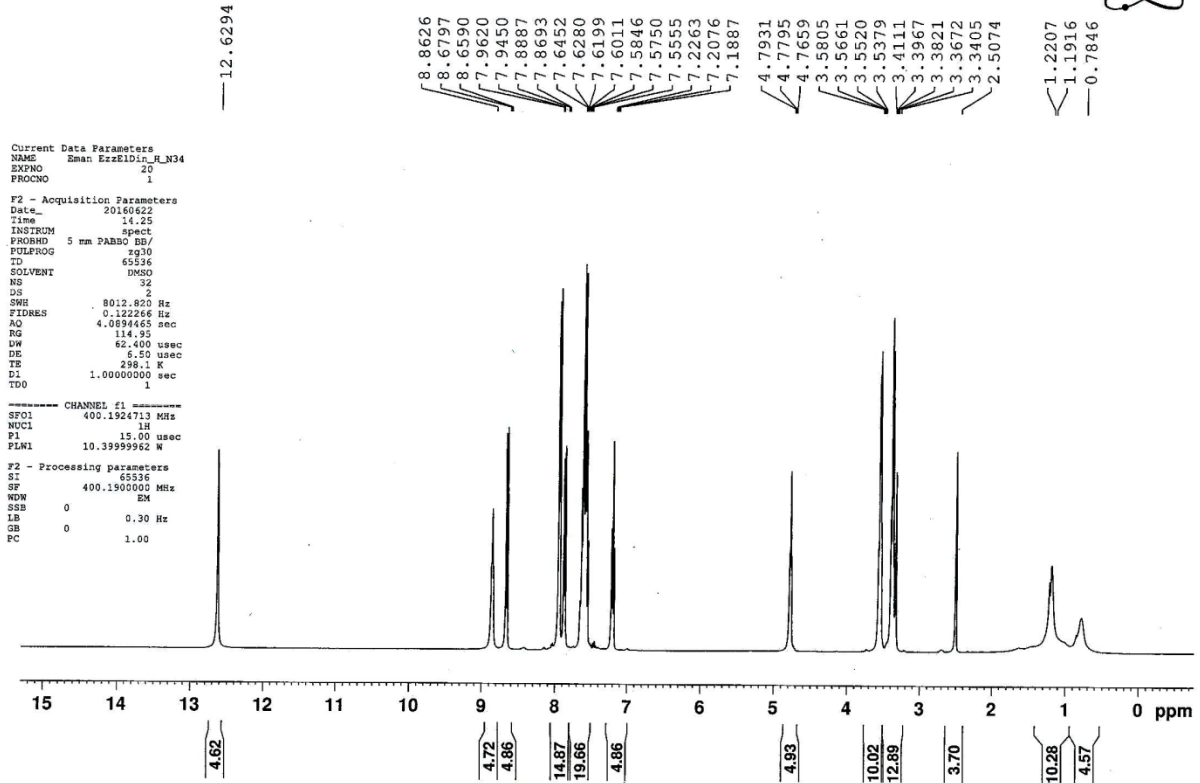


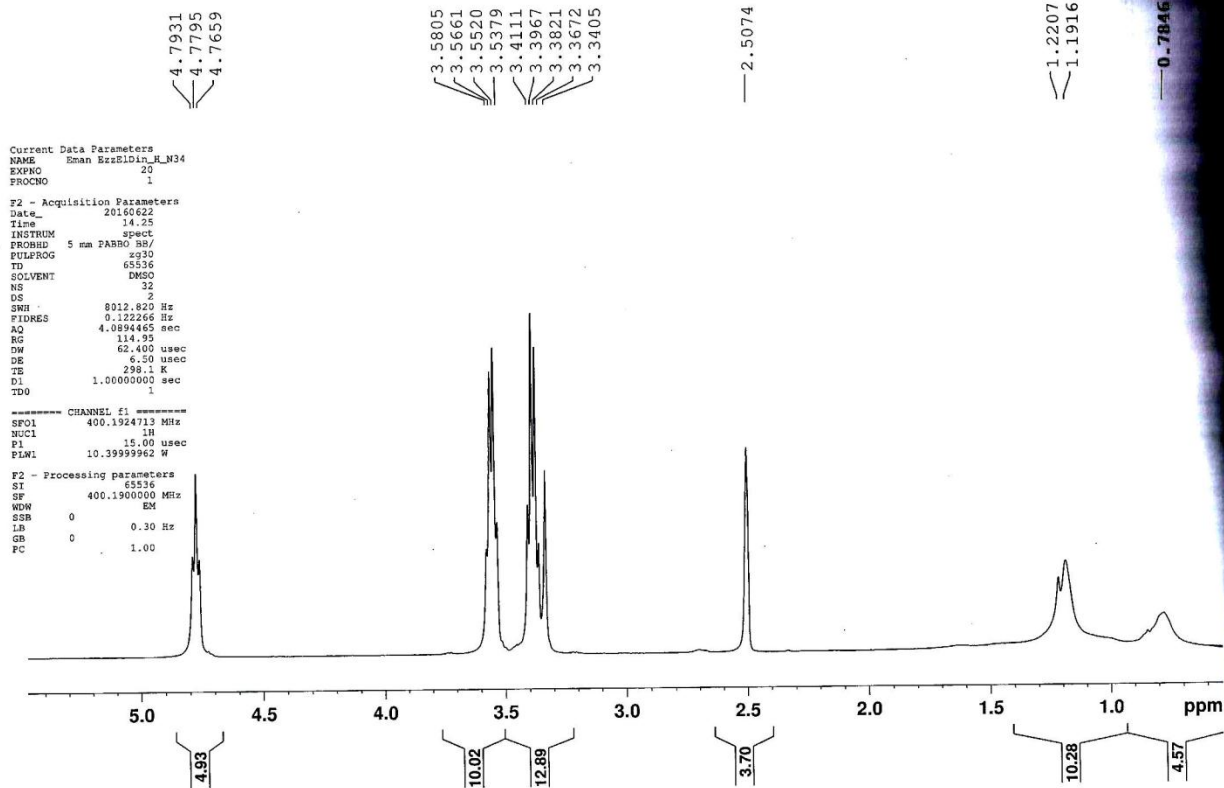
IR of compound 4c



¹H NMR of compound 4c

Microanalytical Unit - FOPCU - NMR laboratory
www.pharma.cu.edu.eg dir-mau.fopcu@pharma.cu.edu.eg







4.7931
4.7795
4.7659

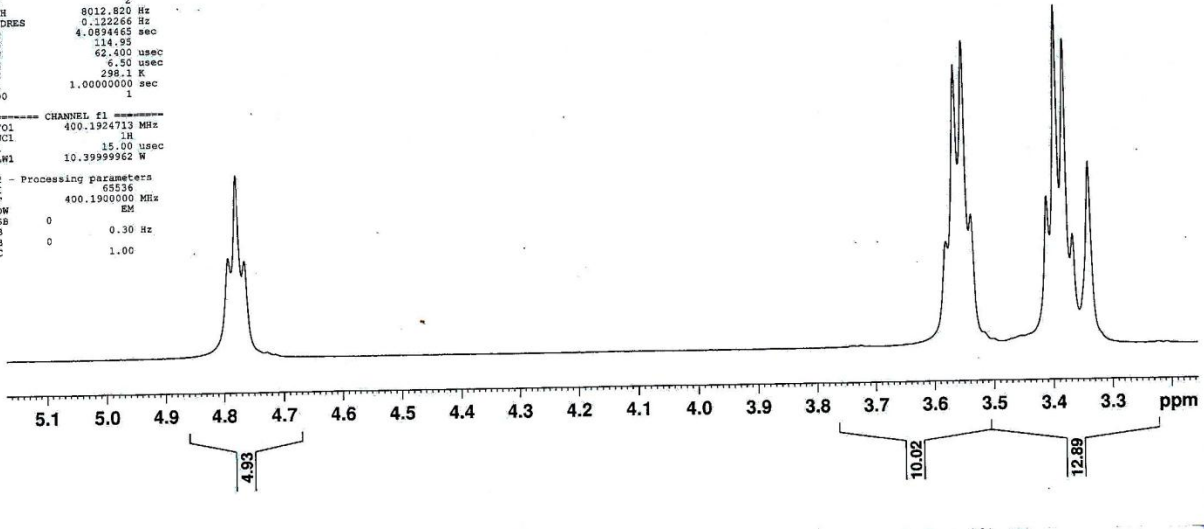
3.5805
3.5661
3.5520
3.5379
3.4111
3.3967
3.3821
3.3672
3.3405

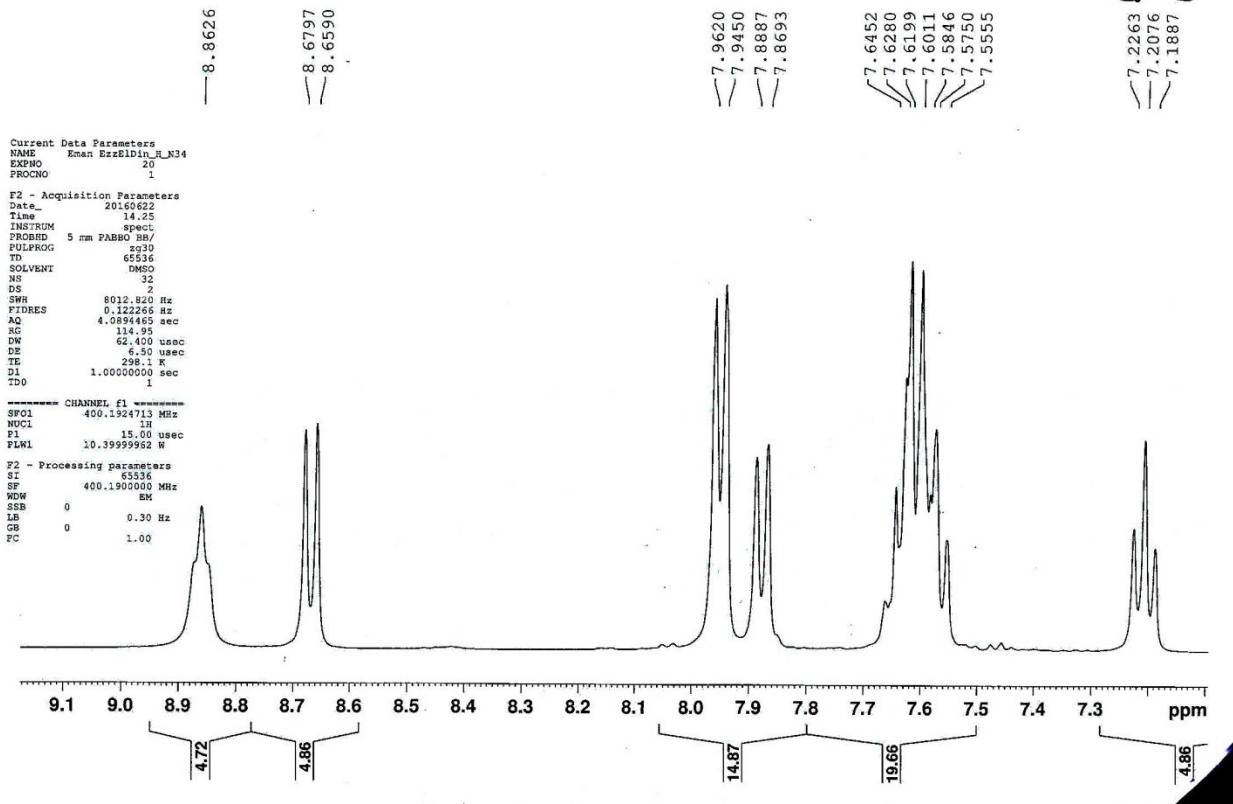
Current Data Parameters
NAME Eman EzzEldin_R_N34
EXNO 20
PROCNO 1

F2 - Acquisition Parameters
Date_ 20160622
Time 14.25
INSTRUM spect
PROBHD 5 mm PABBO BB/
PULPROG zg30
TD 65536
SOLVENT DMSO
NS 32
DS 2
SWH 8012.820 Hz
FIDRES 0.122266 Hz
AQ 4.089465 sec
RG 114.93
DW 62.400 usec
DE 6.50 usec
TE 298.1 K
DL 1.00000000 sec
TDO 1

----- CHANNEL f1 -----
SF01 400.1924713 MHz
NUC1 1H
F1 15.00 usec
ELW1 10.39999962 W

F2 - Processing parameters
SI 65536
SF 400.1900000 MHz
WOM EM
SBB 0
LB 0 0.30 Hz
GB 0
PC 1.00





D₂O

_D2O

Microanalytical Unit - FOPCU - NMR laboratory
www.pharma.cu.edu.eg dir-mau.fopcu@pharma.cu.edu.eg



```
Current Data Parameters
NAME      Eman EzzEldin_M34_D20
EXPNO     21
PROCNO    1

F2 - Acquisition Parameters
Date_     20160623
Time      11.17
INSTRUM   spect
PROBHD    5 mm PABBO BB/
PULPROG   zg30
TD         65536
SOLVENT   DMSO
NS         32
DS         2
SWH        8012.820 Hz
FIDRES     0.122266 Hz
AQ         4.0894665 sec
RG         114.55
DH         62.400 usec
DE         6.50 usec
TE         298.0 K
D1         1.00000000 sec
TD0        1

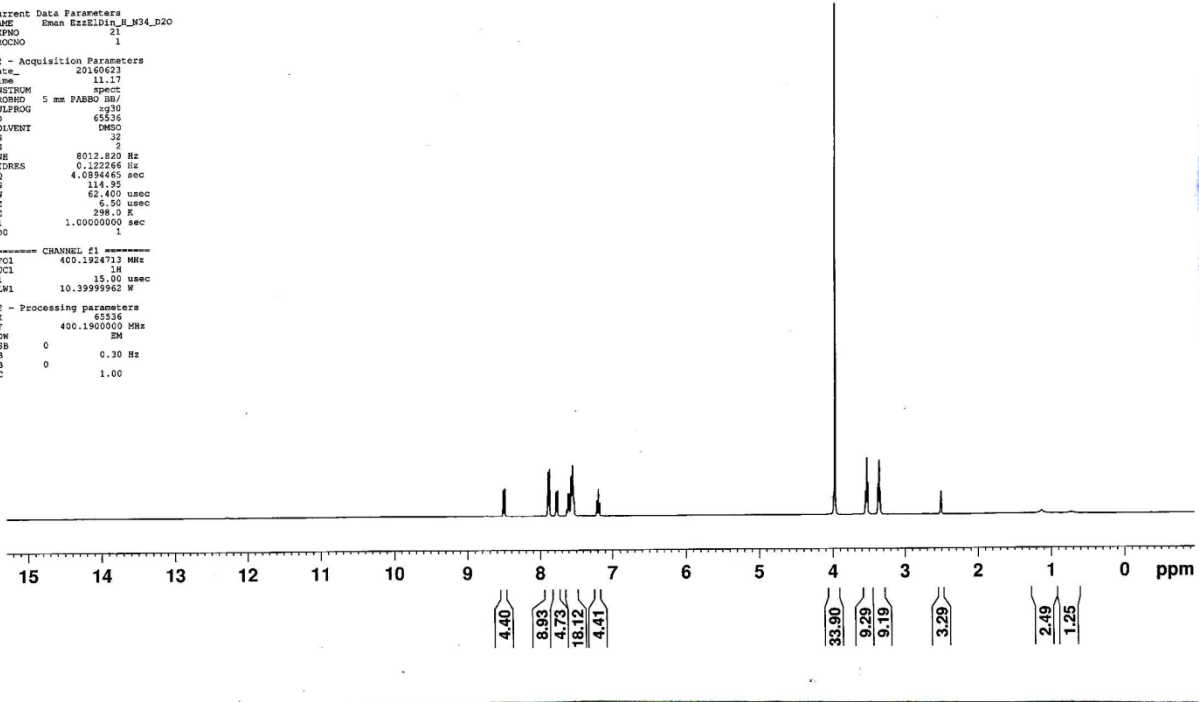
----- CHANNEL f1 -----
SFO1      400.1924733 MHz
NUC1       1H
P1         15.00 usec
PLW1       10.39999962 W

F2 - Processing parameters
SI         65536
SF         400.1900000 MHz
WDW        EM
SSB        0
LA         0.30 Hz
GB         0
PC         1.00
```

8.5143
8.4935
7.8953
7.8776
7.7825
7.7628
7.6329
7.6145
7.5970
7.5747
7.5652
7.5556
7.5389
7.5292
7.5261
7.2136
7.1948
7.1755

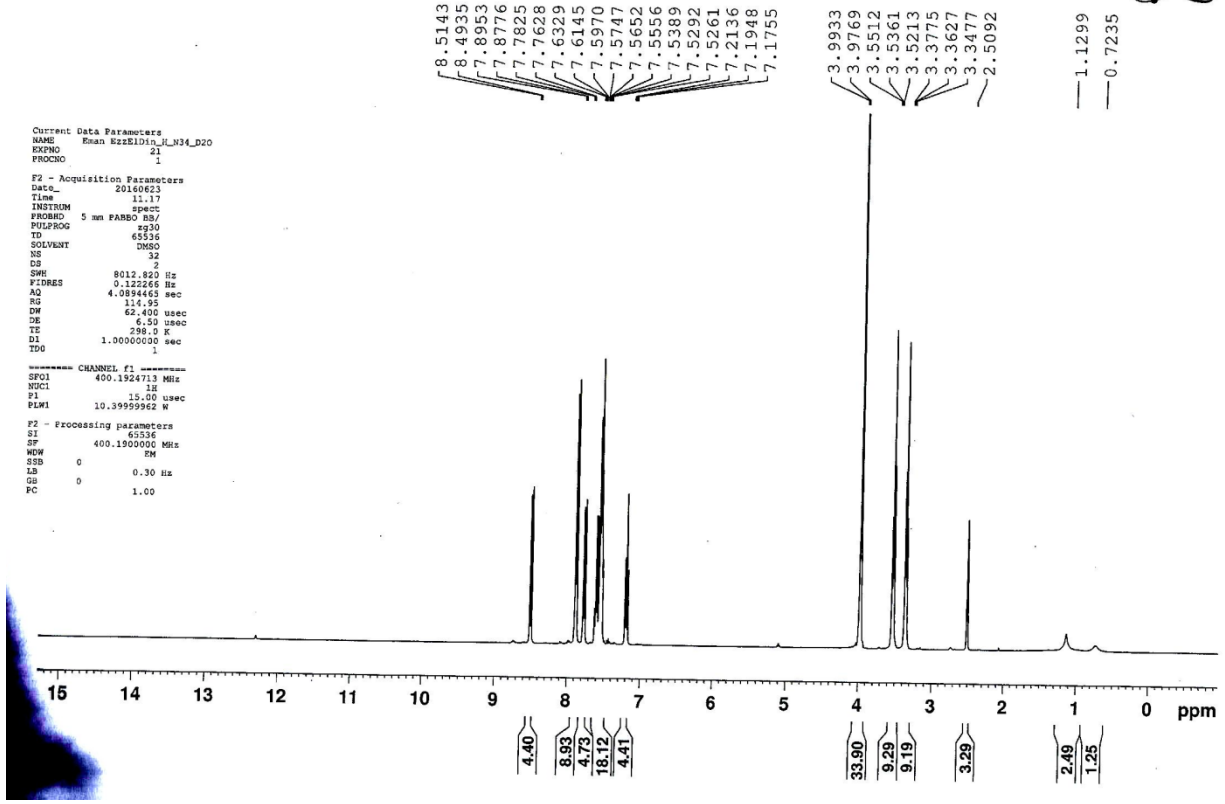
3.9933
3.9769
3.5512
3.5361
3.5213
3.3775
3.3627
3.3477
2.5092

1.1299
0.7235



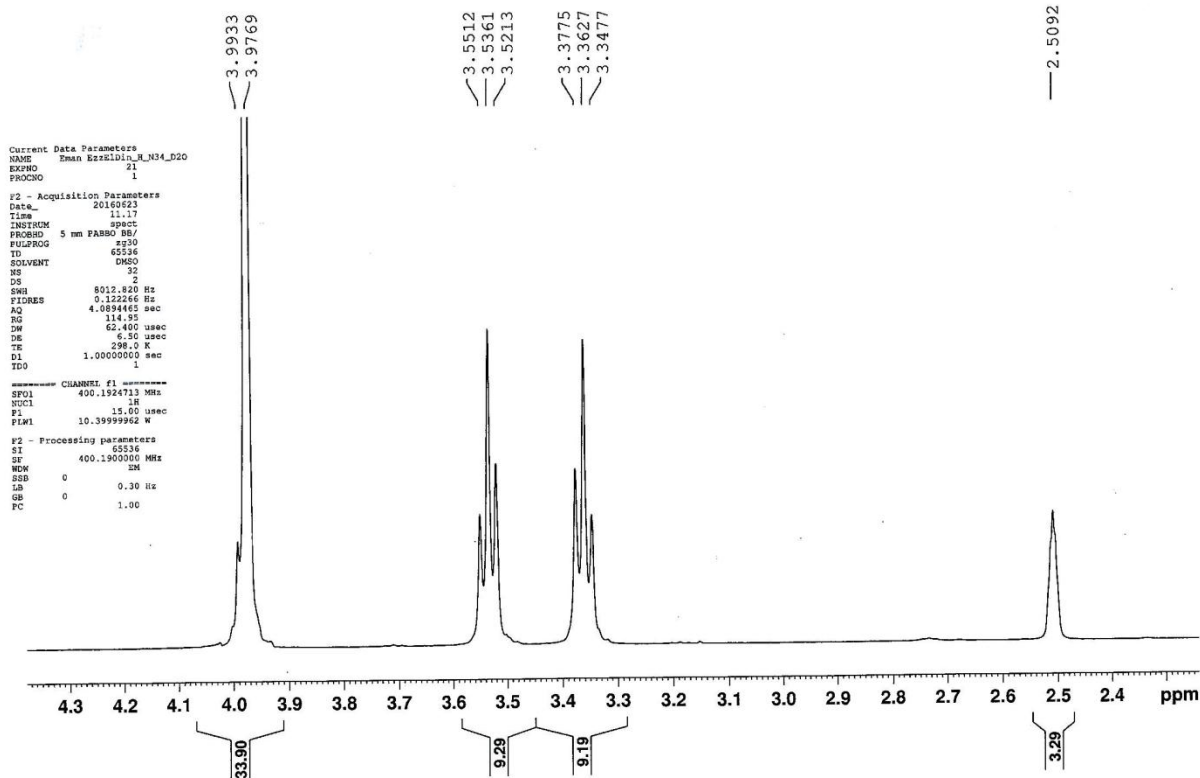
D2O

Microanalytical Unit - FOPCU - NMR laboratory
www.pharma.cu.edu.eg dir-mau.fopcu@pharma.cu.edu.eg



D2O

Microanalytical Unit - FOPCU - NMR laboratory
www.pharma.cu.edu.eg dir-mau.fopcu@pharma.cu.edu.eg



D2O

Microanalytical Unit - FOPCU - NMR laboratory
www.pharma.cu.edu.eg dir-mau.fopcu@pharma.cu.edu.eg



8.5143
8.4935

7.8953
7.8776

7.7825
7.7628

7.6329
7.6145
7.5970
7.5747
7.5652
7.5556
7.5389
7.5292
7.5261

7.2136
7.1948
7.1755

```
Current Data Parameters
NAME: Emau EzzElDin_M_N34_D2O
EXPNO: 21
PROCNO: 1

F2 - Acquisition Parameters
Data_ 2050623
Time 11.17
INSTRUM spect
PROBHD 5 mm PABBO BB/
PULPROG zg30
TD 65536
SOLVENT DMSO
NS 32
DS 2
SWH 8012.620 Hz
FIDRES 0.122266 Hz
AQ 4.0894465 sec
RG 114.95
DW 62.400 usec
DE 6.50 usec
TE 298.0 K
D1 1.0000000 sec
TD0 1

----- CHANNEL c1 -----
SF01 400.1924713 MHz
NUC1 1H
P1 15.00 usec
PLM1 10.3999962 W

F2 - Processing parameters
SI 65536
SF 400.1900000 MHz
WDW EM
SSB 0
LB 0.30 Hz
GB 0
PC 1.00
```

